

Site Specific History: Jingili Water Gardens / Rapid Creek Catchment

Photographic Narrative



Port Darwin, Government Resident Douglas, picnic party in The Jungle, 1871. 'The Casuarinas' or 'The Jungle' was in the vicinity of Casuarina Beach. (Sweet, S.W., SLSA, Darwin Collection, B17389_1.)



Rapid Creek, c1897. (Bleeser, F., NLA, Florenz Bleeser Collection, PIC/9981/28.)



Rapid Creek picnic, 1899. (Unknown, NTL, Peter Spillett Collection, PH0238/2047.)



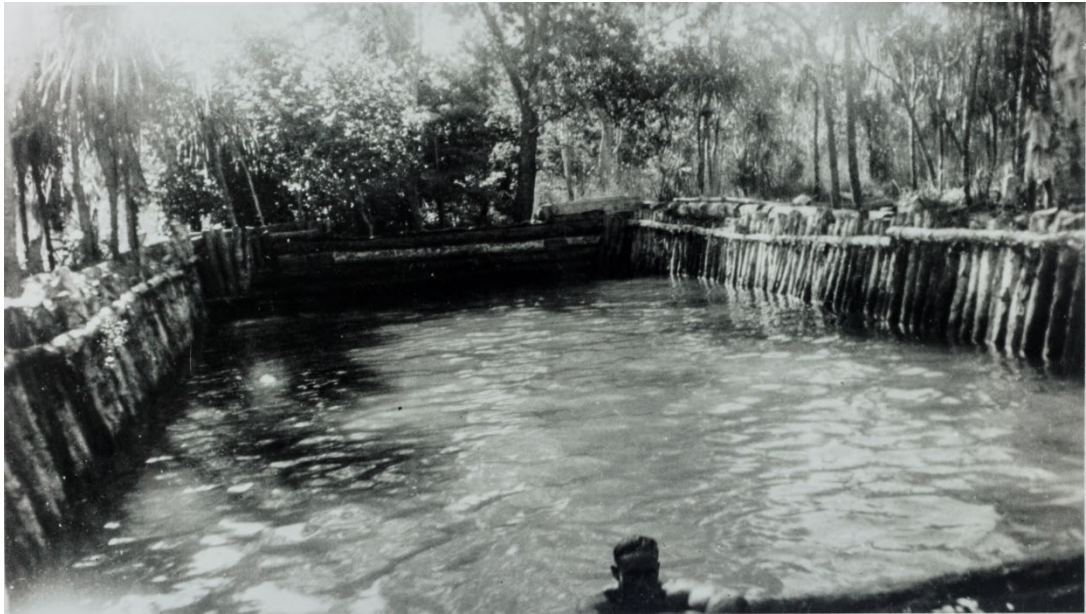
The Hunting Lodge, Rapid Creek, Darwin, c1920. (Unknown, NTL, Roy Edwards Collection, PH0274/0010.)



The Road to Rapid Creek, c1930. (Unknown, NTL, Curnock Collection, PH0482/0003.)



Rapid Creek picnic, c1930. (Unknown, NTAS, Charles Wilson Collection, NTRS 3335 Item 94.)



RAAF swimming pool on Rapid Creek, April 1942. (Unknown, NTL, A.F. Fleetwood Collection, PH0546/0008.)



Bridge over Rapid Creek (possibly Kimmorley bridge area on McMillans road.). (unknown, NTL, Robert Bradford Collection, PH0242/0027.)



Fish trap at the mouth of Rapid Creek, c1949. (Ena Masson, NTL, Jim Clarke Collection, PH0105/0002.)



Nightcliff looking towards Rapid Creek on the right. Aralia Street in the centre, 1960. Note that the suburb of Rapid Creek remains bushland. (Unknown, NTL, Howard Truran Collection, PH0406/0572.)



Rapid Creek, c1967. (Graham, H., NTAS, H. Graham, Collection, NTRS 3406/P1 Item 66.)



Aerial view of Millner, Rapid Creek, Alawa, Northern suburbs, 1968. The area that would become the Jingili Water Gardens is clearly visible. (Unknown, NTL, NT Dept of Lands Collection, PH0139/1561.)



Rapid Creek, 1979. (Unknown, NTL, Northern Territory Government Photographer Collection, PH0095/0213.)



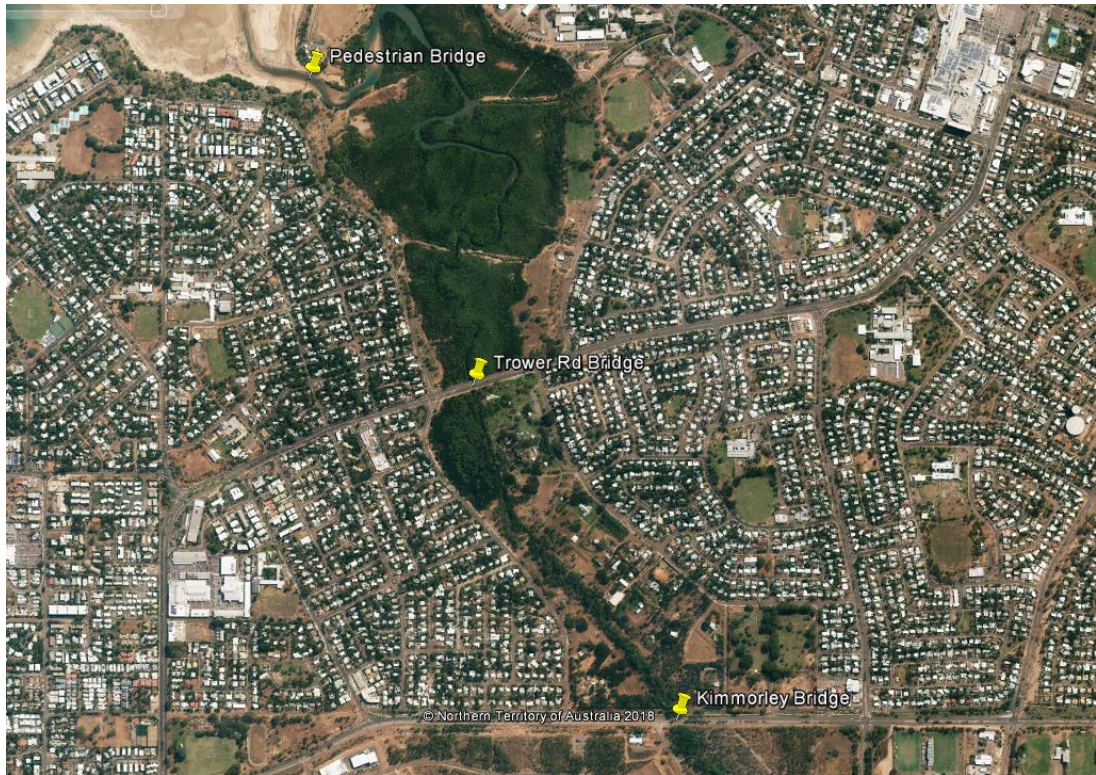
Rapid Creek Water Gardens under construction, 1982. (Weidemann, B.,NTL, NTG Photographer Collection, PH0730/0601.)



Skate Park on Rapid Creek north of Trower Road, 1981. (Weidemann, B., NTL, NTG Photographer Collection, PH0730/0573.)



Rapid Creek bridge, 2016. (Martin, R., Matthew Stephen, Personal Collection, RapidCreek_07.)



Rapid Creek, c2018. (Unknown, NTG Heritage Branch)



Jingili Water Park, 2019. (Unknown, DCC website.)