

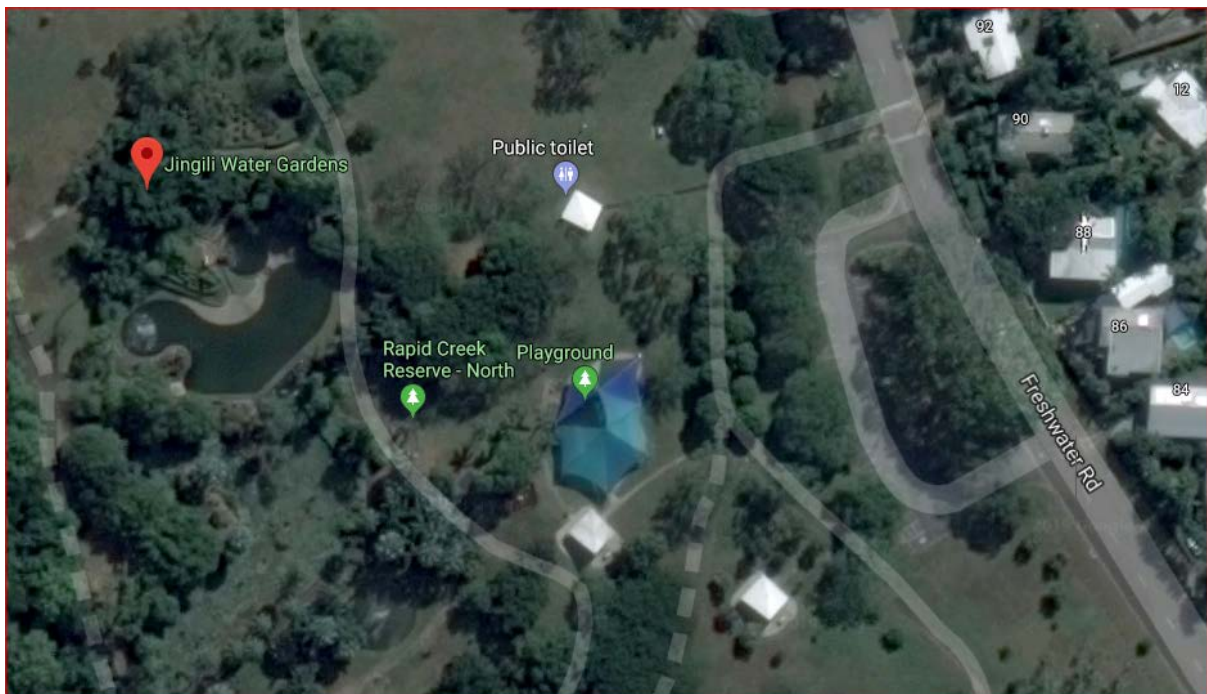
CITY OF DARWIN

PUBLIC ART COMMISSION



DESIGN BRIEF

JINGILI ACCESSIBLE PLAYSPACE REDEVELOPMENT



Proposed Development Site Aerial View

TABLE OF CONTENTS

1. Introduction
2. Background
3. Policies and Strategies
4. Objectives
5. Conceptual Framework
6. Budget Allocation
7. Location and Extent of Commission
8. Commission Scope
9. Commission Considerations
10. Commission Development and Methodology
11. Project Timeline
12. Project Administration
13. Extent of the Contract
14. Expression of Interest Requirements
15. Enquiries

1. INTRODUCTION

Through a strategic approach and vision the City of Darwin recognises its role in the creation of a sustainable, vibrant, creative City. Public art is an important way of achieving these goals.

THRIVE, The City's Public Art Program from 2019 -2023 is the overarching conceptual framework for our upcoming developments (Attachment 1). It encourages artists to contribute to enhancing, defining and re-defining Darwin's built and natural environment. Its aim is to strategically build on our cultural heritage through high quality contemporary Public Art Commissions. It is also intended to integrate public art with identified opportunities through major infrastructure developments to enhance a sense of place and promote the identity of our community precincts.

2. BACKGROUND

City of Darwin has four regional playspaces. Regional playspaces are designed as municipality-wide destination playspaces. Bicentennial Park Playspace was completed in 2017. Yanyula Park Playspace in Anula was upgraded in 2016. Lake Alexander Playspace at East Point is due for upgrade in 2021.

Jingili Playspace is scheduled for upgrade in the 2019/20 financial year.

Jingili is identified as a regional playspace due to:

- its central location in relation to the Darwin northern activities district, the northern suburbs, university, schools, transport infrastructure, access to accommodation and retail options;
- the capacity of the existing site for ongoing improvement and possible expansion of development due to Council owned land surrounding to the facility; and
- the need to provide a significant recreational centre in an already high visitation rate and high profile location.

The Jingili Playspace has provided local residents and visitors with recreation opportunities for almost 30 years. However, the play facility is out of date and in need of redevelopment. It does not meet contemporary recreation or accessibility needs.



Jingili Playspace Current Facility View (Southern End)



Jingili Playspace Current Facility View (Western Side)

2.2 Jingili Playspace Redevelopment Plan

Jingili Playspace is getting an upgrade in 2019/20 as it is in need of renewal. City of Darwin is planning a redevelopment of the playspace for this site that caters for everyone. Our community is incredibly diverse, comprising people

of all ages, abilities and cultural backgrounds and it is critical for Council to ensure public spaces cater for that diversity.

The need for renewal raises the exciting opportunity to develop an innovative regional playspace at Jingili Water Gardens that can be enjoyed by all in our diverse community, with a specific focus on the inclusion and access needs of children with a disability. City of Darwin is working with Variety NT to create a new playspace that is welcoming and inclusive for everyone to enjoy, particularly children with disability. An inclusive playspace invites people of all ages, abilities and cultures to come together. Variety NT will contribute through provision of advice, advocacy and investment of up to \$60,000 to assist in the delivery of accessibility elements. In acknowledgement of the contribution and partnership Variety NT requests that branding be included in the build.

Inclusive Play means that children can play together regardless of abilities and ages – they can share the same equipment, or play side by side on equipment that is modified but does the same type of activity. Not everyone will have the abilities to use all the equipment in the playspace, but everyone will have a choice of a range of activities.

Additionally, a Public Art inclusion will be integrated into the playspace through a unique collaboration between Arts Access Darwin (Darwin Community Arts) through their Free Space Studio program and the City of Darwin. It will bring together 6 artists with disability and a designer to create an interactive sensory artwork within the play area.

An inclusive playspace is more than just equipment. It is the entire setting used and enjoyed as part of the play experience. This includes the user's experience with the surrounds including parking, footpaths, seating, toilets and shade. Inclusive playspace are easy to access, easy to move around, provide a range of play options and challenges, and have appropriate facilities in a comfortable environment. Inclusive playspaces encourage everyone to stay as long as they choose.

City of Darwin has built inclusive playspaces at Bicentennial Park and Yanyula, however, the intent with this playspace is to have a stronger emphasis on a higher level of inclusive and accessible elements and surrounds to ensure this becomes Darwin's a well-regarded destination playspace for people with disability (although not intending it to be exclusive to people with disability) through using the *Everyone Can Play* guidelines to inform the redevelopment.

Everyone Can Play (<https://everyonecanplay.nsw.gov.au/>) is a best practice toolkit for councils to use when creating world-class playspace designed to include everyone in the community. It is based on the following three questions;

- **Can I get there?** Consider location, layout, signage, wayfinding and accessibility to ensure everyone can find their way to, in and around the playspace.
- **Can I play?** The play experience, including the equipment and surfacing, should allow everyone to experience a variety of challenging and engaging play opportunities in a way that suits them.
- **Can I stay?** Consider safety, facilities, landscape and the wider environment to ensure everyone can stay at the playspace for as long as they would like.

To ensure the redevelopment fulfils the social and recreational needs of the local community and visitors throughout the year, it is imperative that the new playspace is designed in such a way as to support diverse user groups and multiple recreational sport and leisure needs.

A community consultation will be undertaken from the 10 September – 13 October 2019 and will inform this development.

The new Jingili accessible playspace will be strategically positioned within the total play landscape of greater Darwin.

The overall development will include improvements to the following:

Play Equipment and Soft fall
Increased Disability Parking
Accessible Toilet Facilities
Lighting
Integrated Public Art
Playspace Shade
Public WiFi

2.3 Heritage and History

Public playspaces, particularly those of exceptional or notable design, hold a very special place in community memory and popular culture. The Jingili Watergardens is not a heritage listed place, though it occupies a prominent place in the psyche and cultural memory of old and new Darwin. It is important to recognise that the Jingili playspace redevelopment provides a tangible link to the built environment and Darwin lifestyle, pre Cyclone Tracy.

It is imperative that the City of Darwin acknowledge the historical importance of the area and its place in community memory through the themes of the playspace and public art. Recognising and capturing this community value will be incorporated in the project planning and delivery of this commission.

The Jingili Watergardens and surrounding parkland including the playspace is a well utilised space by a broad range of community groups. It is used by council for children and young people's activities and by a wide variety of groups, clubs and associations including sporting and fitness groups, pet groups, faith groups and community and cultural groups as well as privately for birthday parties, weddings, reunions and other celebrations.

2.3.1 Heritage and History Informing Design Research

The successful Designer/s in collaboration with the Free Space Public Art Collective will use this research and the chosen theme to inform their concepts designs and where further engagement is required, seek input from identified key stakeholders on the cultural significance, history and stories of this site and its meaning to the community as outlined above. Council Officers will assist the successful Designer/s in contacting key groups and/or individuals that will be able to assist with research during the concept development stage. For a concise history and relevant photographs pertaining to the area see Attachment 2 and Attachment 3.

2.4. Jingili Playspace Redevelopment ('the project')

Whilst the main purpose of the project is to redevelop an existing playspace facility and ensure it has Australian play equipment compliant qualities, the project is also creating an important and significant community place.

As such, the project is also about place making and community connectedness. The challenge for the project is to ensure the new vision holds a meaning and place in community life and psyche of similar or equal value to that currently held. The new development will, with its layers of history, meaning and storytelling, coupled with its state-of the art and accessible and inclusive facilities, occupy a new place in the community that retains a special connection to the past.

3. POLICIES AND STRATEGIES

The public art developed for the Commission will be consistent with the following City of Darwin documents:

3.1 Darwin 2030: City for People. City of Colour Strategic Plan

Goal

5 A Vibrant and Creative City

Outcome

5.2 By 2030, Darwin will be a more connected community and have pride in our cultural identity

3.2 Municipal Plan 2019/20**3.3 Arts and Cultural Development Policy and Arts Plan 2015 – 2020****3.4 THRIVE Public Art Projects Concept Brief 2019-2023****3.5 Public Art Pilot Plan, Public Art Policy and Public Art Guidelines 2015****3.6 Community Inclusion Policy and Access and Inclusion Plan 2019-2022****4. OBJECTIVES**

The Commission will bring to life the rich and multi-layered history of the playspace and its surrounds while a contemporary approach will ensure that the artwork sits comfortably within the redevelopment. The work aims to be accessible to the large numbers of community members and visitors that use the park on a daily basis.

The integration of a public artwork into the redevelopment of the Jingili Playspace aims to:

- Provide a dynamic and engaging artwork that both interacts and provides a counterpoint to the architecture of the new playspace;
- Provide a memorable focus for the public within the playspace;
- Be a site-specific piece that responds to and integrates with the playspace;
- Achieve visually engaging outcomes visible from multiple perspectives;
- Achieve non-visual sensory engaging outcomes such as tactile or auditory elements to increase accessibility and inclusivity;
- Ensure the design, media and fabrication techniques represent excellence in art and design;
- Provide an interesting contemporary layer of narrative, speaking of place, people and community;
- Explore a transformation of the spatial environment of the playspace within the template of the current design; and
- Make the space rather than fill the space.

5. CONCEPTUAL FRAMEWORK

5.1 Overall

The Commission will contribute to the redevelopment of the playspace at Jingili Watergardens with the addition of public art that is integrated within the design of the playspace development through a co-design conceptual framework.

This is a unique public art commission as the commissioned designer will work collaboratively with the newly formed Free Space Studio Public Art Collective (comprised of six selected artists with disability, a workshop facilitator/sculptor mentor and project manager) from Arts Access Darwin at Darwin Community Arts to co-design, curate and integrate the six artists artworks into the final design. This co-creation model for public art will require strong relationship building and communication skills.

The Free Space Studio Public Art Collective is comprised of artists with intellectual disabilities. These professional artists have specific working capacities and support needs that the commissioned designer will need to ensure are at the forefront of their approach to this commission. As a highly engaged collaborative commission, the project structure and timelines will need to be carefully planned in collaboration with the Free Space Studio Public Art Collective Project Manager to ensure that their expectations are appropriate for the commissioned artist cohort.

Critical to the success of this project is the designer's capacity to incorporate the works of the artists into a cohesive whole whilst respecting the integrity of each artist's creation. The incorporation of works and if necessary, any alterations to works will need to be consented to by the artist/s. This process will be supported by the Free Space Studio Public Art Collective Project Manager.

The successful Designer/s will also work closely with Council's Project Team and responsible Council Officers, during the planning stages of the redevelopment to ensure the artwork is carefully integrated within the playspace redevelopment.

The public art component of the playspace redevelopment has the opportunity to:

- Celebrate the Jingili Watergarden's cultural and heritage significance
- Capture the high social values of the park
- Improve space activation – during both day and night

- Help to define the Park's civic character

5.2 Commission Thematic

Through an extensive consultation process with the community and relevant stakeholders, the conceptual theme for the Commission will be identified at the end of the consultation period on 13 October, see 11.PROJECT TIMELINE.

However, Jingili Watergardens, the playspace, and its surrounds including Rapid Creek have a rich and multi-layered history of stories and the commission thematic will definitely relate to the sites historical and cultural significance in some way. Artists and Designer/s will reflect on the history and cultural memory of this place while employing techniques that resonate with contemporary ideas and relevance. This broad theme is intended to provoke individual associations and interpretations specific to the precinct.

Locations have been identified below and include:

- An interactive sensory artwork integrated into the playspace or entry point

Additional possible locations for other public art initiatives (not included in this commission) may include:

- Printed work on the shade cloth covering the playspace and/or
- Façade of the accessible toilet block upgrade

An overall colour palette will inform the project and will be a considered decision by the Project Team once the community consultation closes. This will be discussed with the Designer/s and Artist/s as the project progresses.

Further details are provided in this document at 8. Commission Scope

6. BUDGET ALLOCATION

This commission is a collaborative project between Arts Access Darwin (Darwin Community Arts) through their successful application for grant funding to the Australian Government through the National Disability Insurance Scheme's *Economic Participation of People with Disability – Information Linkages and Capacity Building (ILC) Readiness Grant Round 2019-20* and the Arts and Cultural Development Program of the City of Darwin.

The total combined budget for the Commission is **\$182,800** ex.GST.

However, this EOI process will confirm the preferred candidate to contract to initially deliver Stage 1 (see below). Once Stage 1 is successfully completed, approved and further funding is available, only then will the commissioned candidate be contracted to complete the project.

(\$82,800 Arts Access Darwin contribution for design and fabrication of the Free Space Public Art Collective artworks and \$100,000 City of Darwin contribution towards the integrated design and overarching fabrication and installation costs).

This Designer/s' budget must cover all costs associated with the Commission, including: all communication, collaboration and consultation fees, artwork design, fabrication, sub-contractor fees, technical advice i.e. engineering (if required), compliance with Australian safety standards and any costs associated with transporting the artwork to site, all installation costs, insurance cover i.e. Public Liability, work in progress/product insurance and work in transit and any other related expenses.

Stage 1 – Concept Design fee: The fee for Stage 1 is \$8,000 (excl. GST). Upon successful progression to stage 2, this fee will be included within the total project costs.

Note: There will not be a competitive concept development stage, once selected; the Designer/s will be asked to develop three to four concepts and work with the Project Team before the preferred concept options are presented for final endorsement.

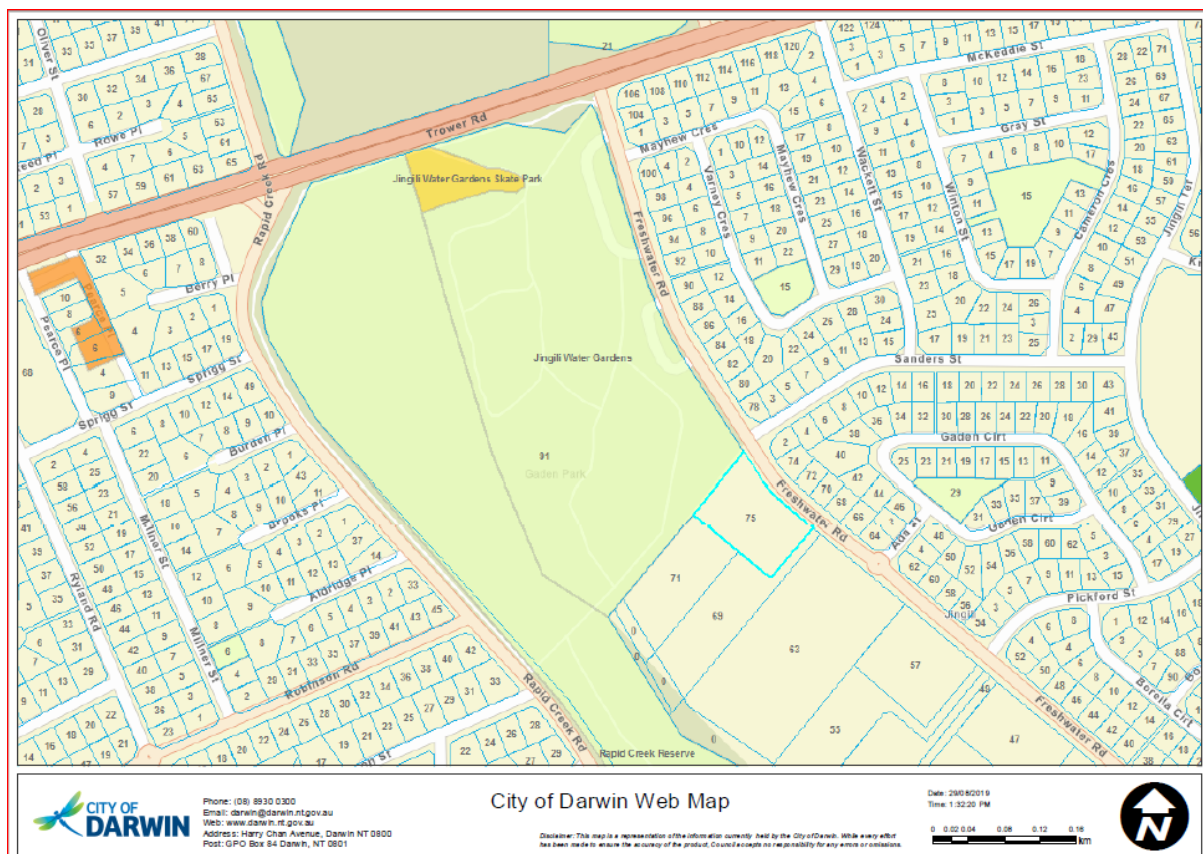
Exclusions from Commission:

Arts Access Darwin (Darwin Community Arts) through their grant is funding the artist fees of six participating artist members of the Free Space Public Art Collective, the artist fees of a workshop facilitator to run the six month workshop program and the wages of a designated Free Space Public Art Collective Project Manager (1day/week) to support the program. They have

also been funded to provide workshop materials in order to develop appropriate maquettes for the 2D/3D artworks and monitor and evaluate their program.

7. LOCATION AND EXTENT OF COMMISSION

The Commission is located at the site known as 91 Fresh Water Rd, Jingili. It is located approximately 10.5 km north of Darwin CBD. The site has primary frontage to Freshwater Rd to the east.



Existing Locality Plan

The extent of the Commission and objectives of this development are:

- To enhance the recreational opportunities for the Darwin community;
- To provide a best practice accessible and inclusive playspace using the *Everyone Can Play* guidelines developed by the NSW Government;
- To create place(s) for increased social interaction, gathering and cultural expression, and assist to build community spirit and social cohesion through participation in healthy lifestyle activities;

- To ensure a high quality design and development outcome which best suits the needs of the locality; and
- To ensure that the development is constructed in a manner that does not impact upon the built environment or the visual amenity of the surrounding locality.
- To consider the natural environment and the redevelopments impact on the area and where possible source sustainable/recycled materials.

8. COMMISSION SCOPE

The Commission will enhance and help bring to life the strong identity of Jingili Watergardens and its facilities.



EXISTING SITE PLAN – LEGEND

1. Playground with Shade structure*
2. Jingili Water gardens water feature
3. Car park

4. Electrical Distribution Board
5. Play Space entrance*
6. Community Garden site
7. Memorial garden (Garden of Reflection)
8. Picnic Shelters with Seating, BBQ's and Bubblers
9. Public Amenities Toilet *

*Public art opportunities for this commission

Public art opportunities for this commission are interactive art piece integrated within the play area and entrance (Item 1 and 5 on the site plan), the façade of the toilet block upgrade (Item 9 on the site plan) and the shade to be installed over the playspace (Item 1 on the site plan).

This commission is specifically for the interactive sensory art piece integrated within the play area. The parameters for this project are a maximum shape of 4m x 4m x 3m (h). It is expected that this will be an offsite construction with installation timeline arranged in collaboration with the overall build.

9. COMMISSION CONSIDERATIONS

9.1 The Public Realm and Duty of Care

The site is in an unsupervised public place; as such, it is critical that the Designer/s are mindful and exercise a Duty of Care in terms of design and material selection.

The Commission must address public risk and access considerations, such as but not limited to:

- can withstand a certain level of vandalism, especially illegal graffiti
- ensuring there are no dangerous protrusions or entrapment issues that might cause injury
- provide structural engineering certification during the design development phase of the Commission if required
- ensuring that the work conforms to relevant Australian Standards as appropriate including CPTEP (Crime Prevention Through Environmental Design) as well as complying with the Disability Discrimination Act 1992

9.2 Site Considerations

The site is a popular and highly frequented public space.

The playspace and area around it is a busy public gathering point. This must remain a consideration at all times during the project, including the installation of the work.

Additionally, as this commission is an integrated element of to the playspace the Designer/s and sub-contractor fabricators and installers will need to collaborate closely with the playspace engineer and playspace manufacturer to ensure that the artwork is effectively integrated into the overall development.

9.3 Materials

Materials proposed should be suitable for the Commission and the site.

As a significant public art commission for the City that will be designed as an interactive sensory artwork, it will play an integral role in interpreting the stories and rich history connected to the site. The material needs careful consideration for safety, durability and aesthetic value. The work must have a minimum design life of 15 years.

Long-term maintenance must be considered when developing concepts, minimising maintenance work as far as possible through the selection of appropriate materials and surface treatments.

There are climatic and site specific conditions for Darwin that Designer/s and fabricators must consider during artwork development to ensure the longevity of permanent works. These conditions include: wind wear and UV degradation, high humidity and extended dry periods, salt air and interactive wear and tear.

10. COMMISSION DEVELOPMENT AND METHODOLOGY

The project will be developed in stages as follows:

10.1 Expression of Interest

The City is seeking Expression of Interest (EOI) through a limited competition model from Australian designers with a background in co-design and collaborative practice who wish to be considered for the design, fabrication and installation of the Commission for this collaborative project with a collective of artists with disability. NT Designer/s are encouraged to apply.

The EOI submission and supporting material will be assessed through a review of the Selection Criteria as outlined below and reflected in the Designer Expression of Interest Form (**Attachment 4**):

Selection Criteria

Criteria	
ARTISTIC QUALITY	Artistic Merit
	Relevance (appropriateness to brief and initial response to brief)
PERFORMANCE	Evidence of relevant experience
	Professional References (for works completed)
TECHNICAL EXPERTISE	Project management and planning
	Business management
LOCAL CONTENT	Local sub-contractors, local suppliers, and/or expenditure

Note: There will not be a competitive concept development stage rather Designer/s will be selected based on their previous experience and suitability for this Commission and their availability. They will then enter into a contract to further develop three or four options as part of the Concept Development stage liaising directly with the Project team and Council Officers in support.

The EOI's will initially be assessed by the Free Space Studio Public Art Collective Project Manager, the Public Art Project Manager and the Project Control Team, before being presented to an external assessment panel for consideration. The preferred candidate will be invited to an interview to confirm the parameters of the project and ensure clarity of expectations before being contracted to commence Stage 1.

10.2 Stage 1 – Concept Development

The successful Designer/s will enter into a Commissioning Agreement with the City of Darwin for Stage 1 – Concept Development. The fee for Stage 1 is **\$8,000 (excl. GST)**.

Requirements:

- Attend mandatory Start-up Project Meeting (date and time to be advised) to confirm the proposed project schedule.
- Attend briefing sessions and virtual site visits as required
- Undertake research, and consultation in relation to the identified theme/s
- Develop three or four concepts including form, dimensions, colours and materials in close collaboration with the Free Space Public Art Collective.
- Prepare an indicative timeline, including the plan for ongoing communications/consultation with the Free Space Public Art Collective, the design development, fabrication and installation stages. Provide detail of Designer/s availability and any prior or upcoming commitments that may impact on the Commission timeline
- Prepare a presentation of the Concept Designs, including finalised concept drawings, maquette, photomontage, detail drawings etc. for the proposed work
- Present Concept Designs to the Free Space Studio Public Art Collective, the Project Team and/or an external assessment panel.
- Provide any other details, information or undertake any further tasks reasonably required by the City to enable the City to evaluate the Concept Design
- Once a decision is made on the preferred concept:
 - prepare an indicative budget, including all costs associated with Design Development, fabrication and installation. This must be within or equal to the total budget for the Commission as per 6.

BUDGET ALLOCATION

The Concept Designs will be assessed by the Free Space Studio Public Art Collective, Public Art Project Manager, Project Team and/or an external assessment panel. The assessment will consider suitability to the site, materials, budget and timeline. The Project Manager may consult relevant internal and external stakeholders in regards to the proposed Concept Designs as appropriate.

Based on the assessment process and selection criteria outlined above, a recommendation will be presented to Council for approval and the Designer/Design Team will be confirmed to proceed with the Commission.

If none of the proposed Concept Designs gain approval, the City reserves the right to not commission the Designer/s. If another suitable designer is not found, the City reserves the right to start the EOI process again and call for new Expressions of Interest.

10.3 Stage 2 – Design Development, Fabrication and Installation

Pending approval of Stage 1, the successful Designer/s will enter into a Commissioning Agreement with the City of Darwin for Stage 2 – Design Development, Fabrication & Installation. The allocation of fees and payment schedule for this stage will be negotiated with the successful Designer/s prior to entering into the contractual arrangement (please note: this fee is included within the total Project costs as per 6. BUDGET ALLOCATION).

Design Development Requirements:

- Liaise and collaborate with the Free Space Studio Public Art Collective as per their proposed timeline
- Ensure Free Space Studio Public Art Collective are included as co-designers in the work and are regularly updated and involved in key decision making
- Liaise closely with the Project Team to ensure the design is coherent with the overall playspace design, landscaping and other potential public art development
- Further develop the design to fabrication-ready
- Engage external technical expertise where required
- Provide engineering certification if required
- Gain approval of sub-contractors, if using, from the Public Art Project Manager
- Provide technical information for all materials proposed for fabrication and installation
- Provide proposed fabrication and installation details for the Commission
- Provide confirmed timeline for all works
- Finalise detailed budget, including all fabrication and installation costs
- Present final design and detailed budget to the Public Art Project Manager for approval

Upon approval from the Public Art Project Manager, the Designer/s will proceed to fabrication and installation of the Commission.

Fabrication and Installation Requirements:

- Fabricate the work as per the approved design, using pre-approved subcontractors (if using),
- Consult regularly with the Public Art Project Manager and Project Team throughout the fabrication and installation process, and comply with inspections conducted by the Project Manager and/or members of the Project Team (the details of these inspections will be determined in advance by the Designer/s, any relevant sub-contractors and the Public Art Project Manager),
- Comply with the relevant legislation, Work Health and Safety (National Uniform Legislation) Act (2014) and Work Health and Safety (National Uniform Legislation) Regulations (2015), at all stages of fabrication and installation,
- Ensure the work is of a quality and standard appropriate to the nature of the work and that the work meets all relevant Australian Standards
- Liaise with the Public Art Project Manager and Site Manager, as required, throughout the artwork installation and prepare and submit all required site safety documentation, including but not limited to; installation schedule and JSA/WHs and undertake any required site inductions

Provide details for the artwork acknowledgement plaque; artist name, date of installation, artwork title, short description of the artwork – please note Council will be responsible for providing and installing the plaque

a Upon completion of the installation the Designer/s will need to provide Maintenance Manual. The Maintenance Manual should include:-

- Artist/s and Designer/s name and contact details
- Artwork title, description of work and date of creation
- A description of the materials used and any installed services or equipment, and their mode of operation
- If equipment has been installed, equipment operating procedures and supplier's names, addresses and telephone numbers
- An inspection, testing and maintenance program detailing the routine and materials required to maintain the work throughout its intended lifespan
- A list of sub-contractors with appropriate contact details
- Anticipated lifespan of the work

Please note: 10% of the Commission fee is held by the City until practical completion of installation is achieved and a maintenance manual (of a standard acceptable to the City) is received.

10.4 Professional Development

As part of this Commission we ask that the successful Designer/s work directly to collaborate with the Free Space Public Art Collective as previously mentioned. This will require well planned communication and mentoring as required. The Designer/s must include this and associated expenses in their planning for Stages 1 and 2. Their scheduled visits and consultation processes will be confirmed through negotiation with the Collective and the Public Art Project Manager. This approach responds to the City of Darwin's commitment to the Darwin Public Art Pilot Plan which aims to build local capacity and advocacy for public art.

11. PROJECT TIMELINE

Monday 2 September 2019	Call for EOI submissions open
Friday 27 September, 2019	Closing date for submissions
Friday 4 October, 2019	Assessment of EOI submissions and selection of Designer/s completed Successful and unsuccessful Designer/s notified
13 October 2019	Community Consultation closes
October 2019	Stage 1: Concept Design Stage
Start November 2019	Stage 1: Concept Design presentation & approval Successful Concept Design presented back to stakeholders
September 2019 – February 2020	Artist Consultation and Co-design development process. <i>(Note: Free Space Public Art Collective Workshops of the six selected artists will run for 2 hours every Tuesday over six months. Consultation and engagement should be planned accordingly)</i>
January – February 2020	Final Design Development
March 2020	Fabrication
23 April 2020 (commencement date. Six Weeks allocated construction time for entire development)	Installation Project completion Launch (TBC)

The project timeline will be reassessed by the Designer/s and the Public Art Project Manager following approval at Concept Design stage, and finalised during Stage 2.

12. PROJECT ADMINISTRATION

12.1 Project Management

The nominated Public Art Project Manager for the Commission and will be the key point of contact for the Designer/s during the Commission. The Coordinator will work closely with the Project Team during the course of the Commission.

Contact Details

Robyn Higgins
THRIVE Public Art Projects Manager
City of Darwin
Phone: (08) 89 300674 or 0438 677 506
Email: robyn.higgins@darwin.nt.gov.au

12.2 Project Team

The Project Team comprises project partners, relevant City of Darwin Community and Cultural Development staff, Engineering and City Services staff, as infrastructure, design and operations representatives. Other stakeholders may be invited to join the Project Team as appropriate.

The Project Team will be responsible for assessing Expressions of Interest received before they are presented to an external assessment panel for consideration and selection of successful Designer as the preferred candidate for Stage 1 – Concept Design. The Project Team also reviews and/or assesses the Concept Designs.

12.3 Declaring Conflict of Interest

12.3.1 Designer/s applying for the Commission must declare any potential conflict of interest at the time of submitting an EOI, or immediately as it arises during the Commission process. Where the disclosed situation reveals a real conflict of interest, or is likely to be perceived as a conflict of interest, the Public Art Project Manager will take appropriate action. If the conflict is in regards to an employee of the City of Darwin the Public Art Project Manager may ensure that the relevant officer/s are not privy to the Commission process. If the conflict is in regards to a person who is a member of the Project Team, this may result in that team member being removed from the project. If it cannot be successfully resolved otherwise, the artist may be removed from the project at any stage.

12.3.2 Members of the Project Team and/or external members of a Committee involved in selection of Designer/s, must declare any potential conflict of interest during the project to the Public Art Project Manager immediately. Where the disclosed situation reveals a real conflict of interest, or is likely to be perceived as a conflict of interest, the Public Art Project Manager will take appropriate action, which may result in the team member being removed from the project. In the case of the Public Art Project Manager being the individual declaring the conflict of interest, the matter is deferred to the General Manager, Community and Regulatory Services.

13. EXTENT OF THE CONTRACT

The selected Designer/s will be required to enter into a Commissioning Agreement with the City of Darwin. The Commissioning Agreement is executed in two stages; Stage 1 – Concept Design and Stage 2 – Design Development, Fabrication and Installation. Both contracts will be negotiated with the Designer/s prior to commencement of the relevant Project stage, including fees and payment schedules.

As a condition of contract, the Designer/s will have to provide a copy of current Public and Product Liability Insurance Certificate (minimum \$10 million liability).

14. EXPRESSION OF INTEREST REQUIREMENTS

14.1 Submissions

Submissions should demonstrate an understanding of the opportunity and suitability for the Project. Designer/s are required to submit the following to register their interest in being considered for the Project:-

1. Completed Designer Expression of Interest Form (Attachment 4)
2. A current Curriculum Vitae (no longer than two (2) A4 pages)
3. Images: No more than ten (10) digital images in JPEG format, maximum 500kb per image.

PLEASE NOTE:

- At EOI stage Designer/s are required to provide brief concept ideas in a one/two page document as there will be no competitive concept design stage.

- Only additional supporting material demonstrating project management capabilities will be viewed (i.e. please DO NOT include exhibition catalogues, media articles)

14.2 Closing Date

All EOI submissions must be received by midnight (ACST) **Friday 27 September, 2019** via email to robyn.higgins@darwin.nt.gov.au

Please contact the Public Art Project Manager if you have any difficulties completing your submission, submitting electronically, or require any accessibility assistance.

PLEASE NOTE: No late submissions will be accepted.

15. ENQUIRIES

All enquiries about this Commission should be directed in the first instance to the Public Art Project Manager.

Public Art Project Manager:

Robyn Higgins

THRIVE Public Art Projects Manager

Phone: (08) 89 300 674 or 0438 677 506

Email: robyn.higgins@darwin.nt.gov.au