

NUMBER	NAME	LEAD AGENCY	CATEGORY			TIME FRAME
MP 049	Charles Darwin Court Development	City of Darwin	Critical	Desirable	Discretionary	Medium Term
						<i>Unlocking the potential</i>

Description

If it is agreed that the bus terminus should be removed from Harry Chan Avenue, there are exciting opportunities to cement this part of Smith Street as a vibrant arts-oriented precinct. Browns Mart Theatre is relatively isolated from the city centre as Harry Chan Avenue causes a break in continuity along the northern side of Smith Street.

Businessman Allan Garraway has developed a concept that would create an arts and culture precinct incorporating heritage elements of the existing precinct. This would complement the recreation of the old Mining Exchange which houses Mr Garraways offices and KPMG, and extend the Civic precinct. New buildings might be built to form a new public square, possibly named Charles Darwin Court, with vehicle access from the existing Yuen Place. New public spaces would provide additional venues for the Darwin Festival.

The concept might be more achievable if it avoids any new buildings in Civic Square, (as this is public parkland) and confines the new construction to Harry Chan Avenue. This would still achieve a new public square to be known as Charles Darwin Court. It will be important to maintain pedestrian access along both Yuen Place and the former Harry Chan Avenue. A modified concept might look something like the plan below.

As discussed in MP041, the retention of access to public transport as part of any redevelopment of Harry Chan Avenue will be essential to provide community access to the precinct as well as supporting the potential future development of Cavenagh Street as a public transport corridor. Options for incorporating public transport access will be explored in the ongoing development of concepts for Charles Darwin Court.

Fig. 140

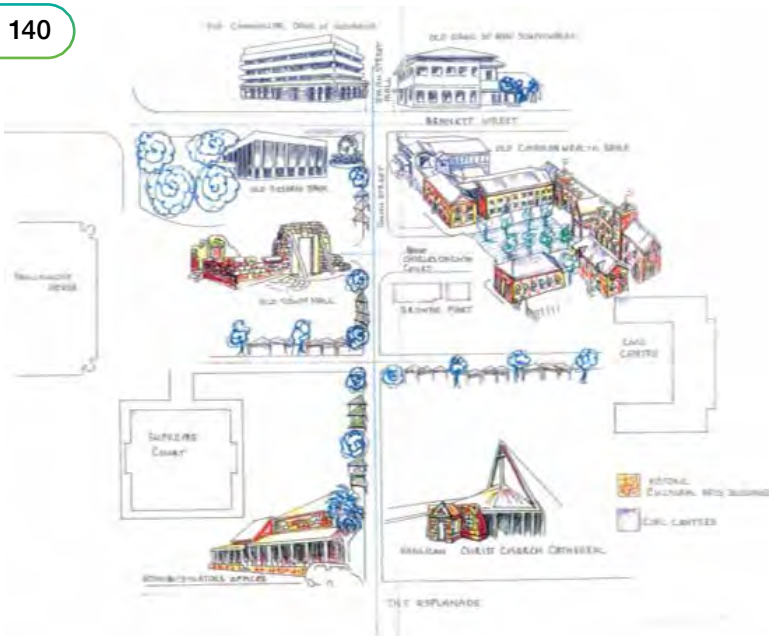


Fig. 141



Fig. 142



Figure 140 – Concept for Charles Darwin Court courtesy of Allan Garraway

Figure 141 – Plan of Charles Darwin Court

Figure 142 – Charles Darwin Court from Smith Street

NUMBER	NAME	LEAD AGENCY	CATEGORY			TIME FRAME
MP 050	Art, culture and youth precinct	City of Darwin	Critical	Desirable	Discretionary	Medium Term
						<i>Unlocking the potential</i>

Description

At Workshop One, during the stakeholder engagement process, a delegation of young people made a powerful presentation to the workshop setting out their hopes and ambitions for Darwin.

They distilled their collective aims into three values for a future Darwin which they hoped would be “inclusive, tropical and engaging”. They challenged the stakeholder group, governments and the consultant team to deliver this. There was physical form to these values, as they sought to establish a place where young people could meet, gather and engage in culture, the arts and follow their interests.

The Master Plan includes an area which might be dedicated to the arts, culture and youth groups. If the bus terminus is relocated or scrapped, Harry Chan Avenue could become a development site. It is proposed to construct elevated small-scale buildings which reference and reflect Darwin’s heritage of elevated buildings, with a tropical garden at ground floor level. This would effectively increase the size of Civic Square, and provide additional venues for the Darwin Festival. At ground floor level and potentially near the large African mahogany shade tree, there could be a café which would help animate Civic Square. It is also proposed to design a “skate-able landscape” of art forms that have an artistic and sculptural appeal.

Consultation with youth groups, prospective artists in residence and the City of Darwin would help determine the scope of work and potential occupancy of these buildings.

The desire for a safe and accessible public transport system was an integral part of the youth presentation at Stakeholder Workshop One. Direct access to safe and convenient public transport will be an essential component of an art culture and youth precinct. Further development of precinct concepts will include engaging with young people and the broader community to explore how their transport needs can be incorporated.

Fig. 143

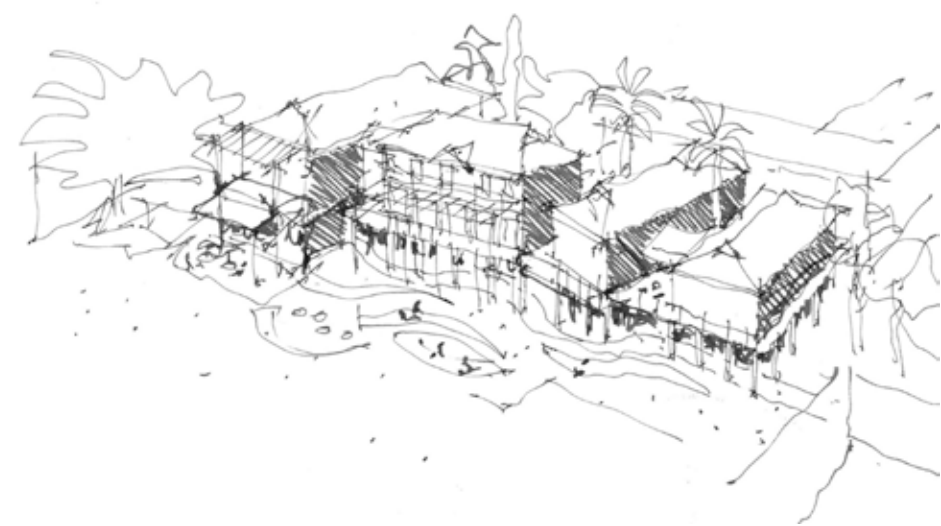


Fig. 144

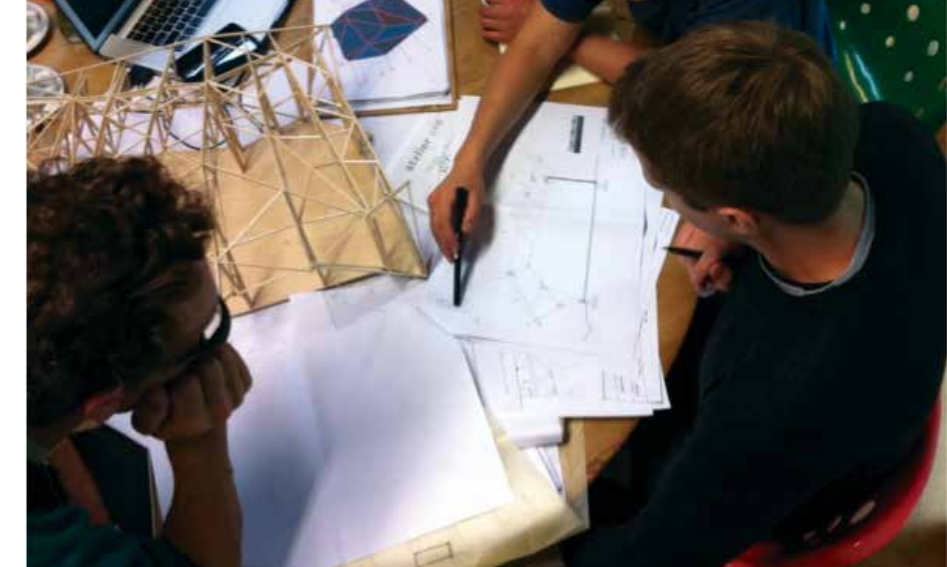


Fig. 145



Fig. 146



Fig. 147



Figure 143 – Human scaled, elevated buildings located in Harry Chan Ave

Figure 144 – A process of consultation with end users

Figure 145 – Create a tropical garden beneath the buildings

Figure 146 – Shady space, ideal for an outdoor café seating area

Figure 147 – Public art

NUMBER	NAME	LEAD AGENCY	CATEGORY			TIME FRAME
MP 061	Social History of Darwin's families	City of Darwin	Critical	Desirable	Discretionary	Short Term
						<i>Unlocking the potential</i>

Description

Engage a local historian to research the social history of Darwin, with a focus on the families who contributed to Darwin’s growth and character and gathering photos that could be used in displays.

Outcomes of this project

A comprehensive social history that could be applied to various objectives including a book, interpretive signage at key sites in the city and multi-media applications such as interpretive displays and apps.

Details

One of the unique characteristics of Darwin is its rich multicultural heritage. This includes the Larrakia people and their interactions with neighbouring tribes, early traders such as the Macassans, the early pearling fleets, immigration by Chinese and Tamil workers as part of the 1880s Gold Rush and building of the North-South railway, European settlement as the Overland Telegraph opened up Australia’s interior, cattlemen, Vesteys meatworks, wars, post-war settlement, refugees, cyclones, development and the general hardships of life in a remote, isolated, tropical town.

Many of the stories of these Greek, Japanese, Malay, Chinese, Italian, Filipino, Timorese, Vietnamese and English families have been told. Others have been passed from generation to generation without a lot of public fanfare or have been lost in the mists of oral history. Collectively, they have made Darwin the fascinating and unique town it is, even though the old China Town and Greek Town have disappeared.

The Darwin CBD Master Plan project was initiated by the City of Darwin and funded by the City of Darwin, Northern Territory Government and Australian Government.

The aim of the project was to define the city’s precincts and plan for the growth of Darwin over the next 20 years.

It included eight key rationales with a number of supporting concepts.

There was substantial commentary during the project that Darwin has a unique history which is insufficiently celebrated. A better understanding of our history has many objectives:

- building the pride of our residents in their history
- celebrating the contributions of our pioneer families
- unlocking the character of the city’s many precincts
- making Darwin a more interesting town for tourists
- contribution to signage and perhaps apps that provide access to the history of individual sites
- capturing our social history while it is still in the living memory of many families.

Proposed scope

The scope would require an historian to:

- research what material is already available on Darwin’s multi-cultural families, with a focus on those who built the CBD;
- conduct interviews with those families willing to contribute oral histories;
- determine what photos are available and who owns the copyright;
- write a social history of Darwin to a point where it might be published or the material adapted for interpretive signage and other uses (separate funding would be required at this point).

Benefits/applications

- booklet on Darwin’s social history
- material for interpretive signage
- complement work by National Trust, Historical Society on preserving architectural history, architectural heritage
- could be used for displays in tourist centres

- could be used for walking tours of the city
- material could be shared with the NT Library and NT Archives
- could be used by Darwin’s families to celebrate their own history
- could be used for library and council displays.



Figure 170 – Existing Cultural Information Sign

2021-2023

PRIORITY PROJECTS



Project Map



Strategic Projects

Location Project

1. Casuarina Aquatic and Leisure Centre
2. Lameroo Beach Seascape
3. Bundilla/Vestey's Reserve
4. Smart Northern Suburbs
5. Service Commercialisation
6. Renewable Energy Hubs

Major Projects

Location Project

- a. Dick Ward Drive Rehabilitation
- b. Lee Point Road Duplication
- c. Mindil Markets Upgrade
- d. Nightcliff Beach Redevelopment
- e. Lake Alexander Upgrade
- f. Coastal Erosion Protection
- g. Gardens Oval Upgrades
- h. Nightcliff Oval Upgrades
- i. Shoal Bay Waste Management Facility Upgrades

Strategic Priority Projects

It is important that the advocacy agenda remains flexible and fluid, enabling Council to be responsive to changing community needs and changes in political and economic environments.

The Territory's growth rate is expected to be one of the highest in the country over the next several years and this—coupled with the opportunities presented by the Australian Government's economic stimulus funding for infrastructure development—presents a very positive outlook for Darwin. City of Darwin will use this opportunity to bid for funding to fast-track its long-term capital and strategic projects identified in this plan.

As a result, City of Darwin is seeking to create opportunities to enhance the economic, cultural and environmental sustainability of Darwin. The City will work with the community and partners, provide leadership, and deliver services to achieve these outcomes. As part of this endeavour, the City is seeking investors and funding partners to support the delivery of a number of major projects for the City

City of Darwin has drawn on the outputs of previous infrastructure planning programs, community consultations and the knowledge of its Elected members—and taken into consideration the Darwin City Deal—to put forward six priority projects that will excite the community, be transformative and draw investment into Darwin to boost its economy and appeal.



CASUARINA AQUATIC AND LEISURE CENTRE

Redevelop the Casuarina pool into an all-seasons aquatic, exercise and leisure community precinct.


\$25.0M
Budget



LAMEROO BEACH SEASCAPE

A transformation of the underutilised and largely inaccessible lower Esplanade and Lameroo Beach area into a vibrant logical extension of the iconic Waterfront tourism precinct.


\$150.0M
Budget



BUNDILLA/VESTHEY'S RESERVE

Opportunity for government-private partnerships to develop a substantial and innovative recreational mixed-use facility to attract tourists, provide economic opportunities and retain residents.


\$40.0M
Budget



SMART NORTHERN SUBURBS

Establishing technology enabled infrastructure across Darwin's northern suburbs enhancing amenities and enabling data-driven decision making in the management of public assets.


\$10.0M
Budget



SERVICE COMMERCIALISATION

A project by City of Darwin to establish a commercialisation framework to guide decision making when considering non-rate revenue generation alongside service provision and community need.


\$1.0M
Budget



RENEWABLE ENERGY HUBS

Invoking transformative renewable energy generation projects and consumption, emission and waste reduction initiatives across the City of Darwin.


\$20.0M
Budget

Major Projects



DICK WARD DRIVE REHABILITATION

The biggest single road project by the City of Darwin involves full pavement rehabilitation, road safety improvements, intersection and storm water upgrades, landscaping and beautification.


\$24.0M
Budget



LEE POINT ROAD DUPLICATION

Lee Point Road lane duplication and footpath upgrades to deliver greater safety and capacity for users of this major commuter route to the expanding far-northern suburbs.


\$10.0M
Budget



MINDIL MARKETS UPGRADE

Modernisation of this iconic tourist attraction with upgrades to public amenities, lighting, road pavements, all-ability beach accessways and the installation of a new playground.


\$8.0M
Budget



NIGHTCLIFF BEACH REDEVELOPMENT

Redevelopment to improve this popular residential destination with upgrades to public amenities and community facilities, including all-ability beach accessways, plus improved lighting and security.


\$8.0M
Budget



LAKE ALEXANDER UPGRADE

Upgrades will enable greater use of this recreational area by providing improved public lighting and security, all-ability access to East Point beach, upgrades to road pavement, public amenities, playgrounds and community facilities.


\$7.0M
Budget



COASTAL EROSION PROTECTION

Development of a masterplan for climate adaption and the subsequent ongoing coastal erosion mitigation and protection measures required at multiple foreshore locations around Darwin.


\$10.0M
Budget



GARDENS OVAL UPGRADES

Upgrades to deliver long-overdue modernising of all facilities and playing surfaces at these much-used ovals as called for by multiple impacted sporting bodies.


\$7.0M
Budget



NIGHTCLIFF OVAL UPGRADES

Deliver necessary improvements and upgrades at the oval in support of the increasing use of the facility, particularly into the evening/night once the oval-lights project is complete.


\$5.0M
Budget



SHOAL BAY WASTE MANAGEMENT FACILITY UPGRADES

Innovative and sustainable upgrades are critical to the ongoing operation of the facility as it enables diversion and commercialisation of green-waste and metals from landfill.


\$10.0M
Budget



DARWIN CITY CENTRE MASTERPLAN UPDATE

Secure tripartite funding to update the Darwin City Centre Master Plan so it continues to be a roadmap positioning Darwin as a vibrant and liveable tropical capital city, supported by a growing population and diversified economy.


\$1.0
Budget