

ENCL: NO

DARWIN CITY COUNCIL
REPORT

DATE: 7/09/09

| | | |
|-------------------|--|---------------------|
| TO: | ENVIRONMENT & INFRASTRUCTURE COMMITTEE/OPENA | APPROVED: DC |
| FROM: | GENERAL MANAGER INFRASTRUCTURE | APPROVED: DL |
| REPORT NO: | 09TS0178 DL:DC | APPROVED: LC |
| COMMON NO: | 316857 | |
| SUBJECT: | SMITH STREET CONNECTION - PROGRESS REPORT OCTOBER 2009 | |

ITEM NO: 9.1

SYNOPSIS:

The Northern Territory Government are undertaking an upgrade of the pedestrian walkway along Smith street from the Mall to the entrance of the suspended walkway over Hughes Avenue, in order to provide a connection between the Central Business Zone and the Waterfront development.

Council has been engaged in consultations with the Northern Territory Government and Principal Contractor (Macmahons Constructions) as a primary stakeholder and have endeavoured to accommodate the relatively narrow timeframes available. Construction is scheduled for completion in November 2009.

GENERAL:

Works are currently progressing at Areas 4 and 5 (Northern end of the site), please see Figure 1 and on the Eastern side of Smith Street (Civic Centre side) shown in Figure 4. Footings and blades structures are in place and services (electricity, Telstra) are currently being established.

Works in Area 1 (adjacent to Waterfront access walkway above Hughes Avenue) have commenced, refer Figure 3 within this report.

Areas 2a and 2b have been opened to pedestrian traffic (Figures 2 and 5) and incorporate disabled access.

Rent samples have been poured in-situ at one of the rent sites, please see Figure 6. A dark blue glass has been selected to give colour contrast to the base green pavement areas. The blue represents oceans water surrounding South east Asian land masses, defined in the rents by the inclusion of white glass particles.

The irrigation design has been finalised in consultation with Council's irrigation staff (Infrastructure Maintenance) including the type and location of controller.

Much effort has been placed into the assessment and selection of tree species with *Samanea saman* (Rain Tree) being selected as the most suitable in absence of native species being available. This species was selected due to its growth habit meeting the necessary criteria (large spreading canopy), availability and matching with existing themes within the central business district. Council Forest Management staff (Infrastructure Maintenance) have assessed individual tree specimens for approval prior to installation.

A variation to the tree pit design on the western side of the road is required to accommodate different physical characteristics of the site. These details have been finalised and also incorporate principals of Water Sensitive Urban Design. Works on the subsoil drainage and pit excavation have begun (please see Figure 4).

The public art components of these works are to be included at three identified nodes. This component is yet to be defined and is expected to be finalised after civil works are complete.



Figure 1. Installation of blade structures at Northern end of site, Area 4.



Figure 2. Blade structures in Area 3, looking North.



Figure 3. View of blade installation at Area 1 with stainless cables, the Waterfront walkway entrance.

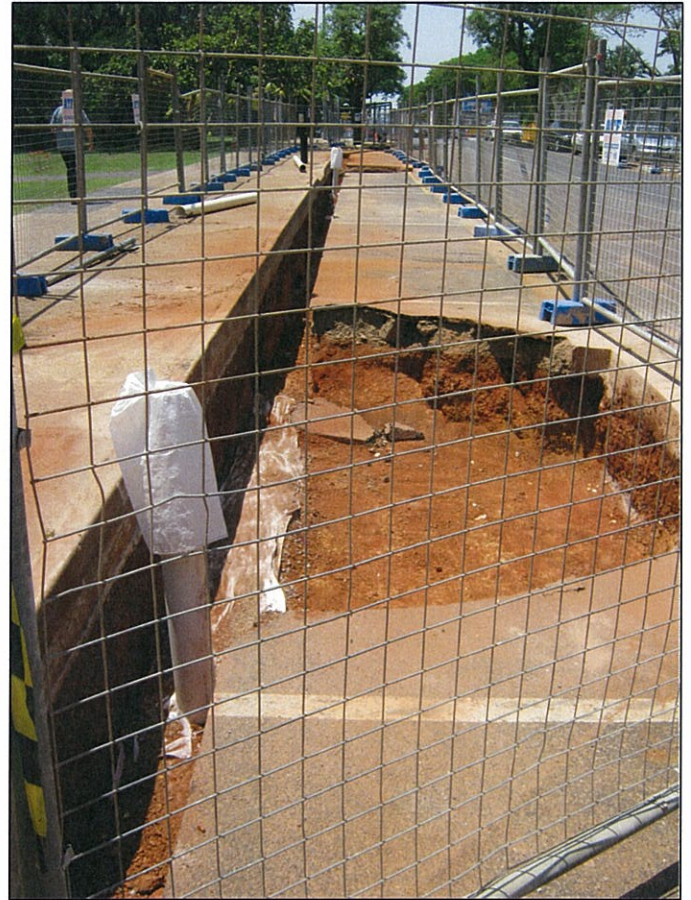


Figure 4. Tree pit and subsoil drainage on the Eastern side of Smith Street.



Figure 5. Pedestrian access along Area 2a and 2b.



Figure 6. sample of rent treatment (green).

Stainless steel stabilising cables have been established on blades in areas 1-3 See figure 3.

Landscaping has begun (on Northern territory Government land) in areas 2 and 3 and grass is currently under establishment. Please see Figures 7 and 8.



Figure 7. Grassing at Area 3



Figure 8. Grassing at Area 2.

Northern territory Government are currently assessing costs of enhancing the proposed LED screens on the blades and how improvements in technology might better suit the purposes of public art displays in addition to displaying signage.

FINANCIAL IMPLICATIONS:

NIL for construction. Maintenance budget will be required when gifted to Council this will be the subject to a future report as discussions are occurring with the Northern Territory Government regarding these costs.

STRATEGIC PLAN IMPLICATIONS:

The issues addressed in this Report are in accordance with the following Goals/Strategies of the Darwin City Council 2008 – 2012 as outlined in the 'Evolving Darwin Strategic Directions: Towards 2020 and Beyond':-

Goal

1 Achieve Effective Partnerships and Engage in Collaborative Relationships

Outcome

1.1 Improve relations with all levels of Government

Key Strategies

1.1.4 Play a strategic role in the planning and developmental processes that impact Darwin

LEGAL IMPLICATIONS:

NIL

ENVIRONMENTAL IMPLICATIONS:

NIL

PUBLIC RELATIONS IMPLICATIONS:

Significant, as the site is highly visible and will represent primary pedestrian thoroughfare from the Central Business Zone to the Waterfront and Wharf and will link into Council's MY0800 City revitalisation works in The Mall delivering a positive outcome.

COMMUNITY SAFETY IMPLICATIONS:

NIL

DELEGATION:

NIL

CONSULTATION:

NIL

PROPOSED PUBLIC CONSULTATION PROCESS:

Currently being managed by the Northern Territory Government as the Project Manager.

APPROPRIATE SIGNAGE

Currently being managed by the Northern Territory Government as the Project Manager.

PAGE: 6
REPORT NUMBER: 09TS0178DL:DC
SUBJECT: SMITH STREET CONNECTION - PROGRESS REPORT OCTOBER 2009

RECOMMENDATIONS:

THAT it be a recommendation to Council:-

THAT Report Number 09TS0178DL:DC entitled Smith Street Connection - Progress Report October 2009, be received and noted.

DROSSO LELEKIS
MANAGER INFRASTRUCTURE
PROJECTS

LUCCIO CERCARELLI
GENERAL MANAGER
INFRASTRUCTURE

Any queries on this report may be directed to Dave Cash on 89300623 or Email
d.cash@darwin.nt.gov.au