

**July 2017**



# **Community Consultation Report Level 2 Consult**

## **Gardens Road Parking**

### **CONTENTS**

- Community Consultation Report
- Appendix i – Materials and Methods used for Consultation
- Appendix ii – Survey Results in full

# Community Consultation Report

## 1. BACKGROUND

Council has identified that while there are no major problems with the current parking along Gardens Road, there continues to be access issues caused by vehicles parking over shared paths at times.

Currently informal parking is allowed on the Botanic Gardens side (east). Parking is prohibited on the Gardens Oval (west) side as indicated by a yellow line. The yellow line was installed in 2012 following a request from AFLNT. (see the notes on historical background, below)

When public events are held, parking spaces are in high demand. At these times there is often illegal parking along the yellow lines, on verges etc. There has also been a long term practice of vehicles parking across the paths in order for spectators to watch football games from outside the venue.

This consultation report is the result of a decision from Report 17TS0006 that went to Council in February 2017.

*Report to Council 17TS0006 Car Parking Along Gardens Road, The Gardens, between Gilruth Avenue and Chin Quan Road.*

*Decision No.21\5206 Council undertake a Level 2 consultation followed by a further report to council.*

### The historical background to this issue:

- Request from AFLNT in October 2011 to “have the yellow line repainted and the *No Standing* signs put back up”. AFLNT claimed that spectators were parking there and drinking alcohol and abusing the umpires.
- Council repainted this yellow line prior to March 2012
- At this time (2012) Council rangers spoke to people on site informing them that parking was not allowed along the yellow line.
- There has continued to be ad hoc parking throughout this area and illegal parking along the yellow line.
- The issue of car parking along Gardens Road was raised in General Business at Council Meeting 13 December 2016.  
The discussion was around vehicles parking over the paths.  
Decision No.21\5109. *THAT a report be prepared to consider allowing and formalising car parking along Gardens Road between Gilruth Avenue and Chin Quan Road.*

- February 2017 – Report to Council 17TS0006 Car Parking Along Gardens Road, The Gardens, between Gilruth Avenue and Chin Quan Road. Decision No.21\5206 Council undertake a Level 2 consultation followed by a further report to council

## 2. OBJECTIVES

The objectives of this consultation program are:

- To inform the community that the reasons for the review of on-street parking along Gardens Road are that:
  - some people (especially those with limited mobility) are experiencing access issues because of cars parking across shared paths.
  - events in the area create pressure on parking
- To seek the views of the community on the four parking options proposed by Council.
- To inform a decision on what on-street parking arrangements Council should implement.

## 3. APPROACH

The consultation is consistent with the City of Darwin’s Community Consultation Policy025. It is a Community Wide Level 2 plan designed to provide the community and stakeholders with information about the options available, seek their views, and provide feedback on how public input influenced the outcome. The consultation period commenced on the 5 June and closed on the 7 July 2017.

## 4. STAKEHOLDERS

Stakeholder	Interest	Engagement
General public		
Visitors to the area	Access to parking spaces Access to shared paths Safety when in the area Scenic shaded area	Information flyers placed on vehicles in area. Media – Facebook Post, COD website, NT news, radio Digital – email distribution list, Enewsletter <b>Appendix I (below)</b>
Visitors to the area with limited mobility (City of Darwin Disability Advisory Committee)	Path and area access issues for people with limited mobility	Email with attached information flyer and link to website/survey. Attended Disability Advisory Committee meeting
Neighbours		
Nearby residents	Access to shared paths	Letterbox drop of Information

Covering approx. 400 metres from the area	<p>Access to streets &amp; properties during events</p> <p>Safety when in the area</p> <p>Scenic shaded area</p>	Flyer
Darwin Botanic Gardens (Director)	<p>Visitor access to parking for GBBG visitors</p> <p>Visitor access to shared paths for GBBG visitors</p> <p>Visitor safety when in the area</p> <p>George Brown Darwin Botanic Gardens Draft Visitor Experience Development Plan</p>	Emailed with information followed by meeting onsite at GBBG.
Darwin Amphitheatre, Darwin Festival		Emailed individually to suggest meeting and included Information Flyer
Darwin Entertainment Centre		Emailed individually to suggest meeting and included Information Flyer
Eva's Cafe	<p>Visitor access to parking for Café/GBBG visitors</p> <p>Visitor access to shared paths for Café/GBBG visitors</p> <p>Visitor safety when in the area</p>	<p>Emailed individually to suggest meeting and included Information Flyer.</p> <p>Phone discussion with owner</p>
Gardens Park Golf Links	<p>General access to parking spaces &amp; shared paths (although onsite parking is sufficient for their patrons)</p> <p>Event road closures and access to golf links.</p> <p>Safety when in the area</p>	<p>Emailed individually to suggest meeting and included Information Flyer</p> <p>Follow up meeting on-site</p>
Mindil Beach Sunset Market Association	Visitor access to parking for market visitors	Emailed individually to suggest meeting and included Information Flyer.
<b>Sporting Bodies</b>		
AFL NT	Minimise spectators parking on verge (alongside yellow line) to watch games	Emailed individually to suggest meeting and included Information Flyer

	Visitor access to parking	Follow up meeting on-site
Cricket NT	Visitor access to parking	Emailed individually to suggest meeting and included Information Flyer  Phone discussion (meeting not required)
Football Federation NT		Phone & emailed individually to suggest meeting and included Information Flyer
Softball NT		Emailed individually to suggest meeting and included Information Flyer  Phone discussion (meeting not required)
Waratahs Softball Club (WSC)		Emailed individually to suggest meeting and included Information Flyer  Phone discussion (meeting not required)
<b>Sporting Clubs</b>		
Waratahs Football Club	Minimise spectators parking on verge (alongside yellow line) to watch games  Visitor access to parking	Emailed individually to suggest meeting and included Information Flyer  Phone discussion (meeting not required)
Waratah Cricket Club		Emailed individually to suggest meeting and included Information Flyer  Phone discussion (meeting not required)
Banks Football Club		Phoned / Emailed individually to suggest meeting and included Information Flyer
Port Darwin Football Club (soccer)		Emailed individually to suggest meeting and included Information Flyer  Phone discussion (meeting not required)
<b>Government</b>		
NTG Northern Territory	Increased road closures for	Emailed individually to suggest

Police, Fire and Emergency Services	major events in the area  Safety when in the area	meeting and included Information Flyer  Follow up meeting COD
NTG Department of Tourism and Culture	Minimal impact (events through NT Major Events)	Phone discussion (meeting not required)
NTG Dept of Transport	NTG buses do not currently use Gardens Road  Bus parking bays may be required for events	Emailed individually to suggest meeting and included Information Flyer  Phone discussion
NTG NT Major Events	Major events such as Bass in the Grass require road closure	Emailed individually to suggest meeting and included Information Flyer  Phone discussion
City of Darwin Staff		Email with attached information flyer and link to website/survey.
City of Darwin Alderman		Email with attached information flyer and link to website/survey.

## 5. METHODS AND MATERIALS

Information was made available to the community via:

- Information flyer (to local residents, visitors to the area, general)
- City of Darwin website
- Survey
- Social media
- E-Newsletter
- NT News stories through City of Darwin one page advertorial
- Discussion on local radio through Lord Mayor segments

Copies of the methods and materials are provided in **Appendix I below**.

## 6. CONSULTATION RESULTS

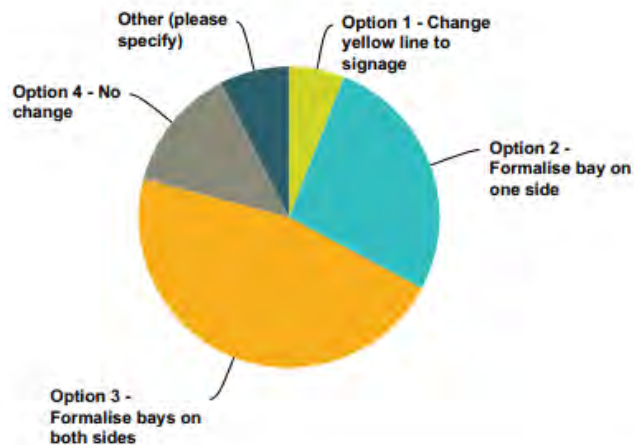
There were 67 survey responses received. There were 16 phone and face to face meetings with the nine key responses summarised here.

A full copy of the survey responses is included in **Appendix II** at the end of this report.

## SURVEY RESULTS SUMMARY

The survey results show that 60% of the respondents visit this area and 35% are local residents. 38% walk on the footpaths along Gardens Road and 20% cycle along these paths. 8% use prams or mobility devices along the footpaths. 24% park along Gardens Road or nearby.

The largest group, 46% of respondents, preferred *Option 3: Formalise bays on both sides on Gardens Road*. 27% chose *Option 2: Formalise bays on one side (GBBG)* with the option to cover 'No Parking' signs during events. 13% chose *Option 4: No Change* to current parking arrangements and 6% wanted the basic change of *Option 1: Change yellow line to 'No Parking' signage* that could be covered during events.



Answer Choices	Responses
Option 1 - Change yellow line to signage	5.97% 4
Option 2 - Formalise bay on one side	26.87% 18
Option 3 - Formalise bays on both sides	46.27% 31
Option 4 - No change	13.43% 9
Other (please specify)	7.46% 5
<b>Total</b>	<b>67</b>

39% of respondents have experienced issues with accessing the footpaths along Gardens Road once (9%) or more (30%).

**Comments received include:**

On the options:

*Bays on both sides offer the best opportunity to maximise car parking during Mindil markets and other events. The adhoc parking arrangements do not maximise space. The road should also be 40km/h during events, which will slow down traffic and account for parking manoeuvres*

*I prefer option 3 because this provides a significant quantity of car parking that should be available for the majority of time, and erecting no standing signs makes this impossible, when the issue is for a minority of time. I do not believe the signs will be bagged most of the time.*

*Formalising the spots totally makes most sense. Banning parking seems over top, and the suggestion to perhaps cover signage during major events is plain silly - gives the organisers another thing to think about, and leaves plenty of room for misinterpretation.*

*I think formalised parking on one side is better with signage so those who get in first know they just park on street. Parking on the other side would make the street too narrow for good visibility when you already have lots of pedestrians crossing from Mindil, esp at night.*

*There needs to be more off street parking options. There is a huge open area between Gardens Rd and Channel nine that could be developed into a carpark that is only opened when there are events on. This would stop people parking on the yellow line next to Gardens Oval (if it's dangerous to park there why would be allowed to some times but not others?) The carpark could be opened only for events and perhaps the open drain next to the footpath could be covered over to make a larger and safer path for pedestrians, prams, wheelchairs etc to get to the Gardens safely and comfortably. The carpark could be kept closed after major events to avoid anti social behaviour.*

#### More buses, car parks & disabled access:

*We don't need more car parks in the immediate area of the Gardens; we need to encourage people to use alternate means or to park in the large parking area that is set up for Mindil Markets. It isn't very far to walk.*

*You need to add another car parking area maybe top end near light cars already cars park there on big events. Not good shutting off gardens rd traffic was a night mare tonight cars were parked on the footpath on the main rd. About time you made the area across from the footy oval a car park it is no more walking in mud in the wet season*

*More priority parking for the elderly and disabled*

*More buses needed for events to this area*

*More car parking required in the area*

*I am not sure adding car parks to the road is the answer either. Perhaps better utilising the Mindil Beach car park is better with better pedestrian access.*

*Accessing the access parks inside the botanical gardens gate is a real problem during large events. Those directing traffic are not aware of parks and or often unwilling to assist those that need close parking. Of the informal parking on event days should be dedicated to accessible parking.*

*Look to more parking among the trees beside the golf course. Perhaps a highrise car park could be built in Salonika Street to assist in this area with primary use being for city workers that then catch a shuttle bus.*

*Parking on Gardens Road during major events should be reserved for parents with prams, disabled parking etc.*

*Build an off road car park*

*Promote parking along chin quan road*

#### Trees



*It is such a pretty drive, please don't change it. Why not encourage people to park at Mindil*

*Darwin does not have enough trees and by electing for option 1 (preference is really option 4) this minimises the impact on trees and on this wonderful green corridor in our area. At least option 2 provides extra parking in the case of events and can be controlled.*

*Don't cut down any trees because the trees are cool and even though some people are to lazy to walk don't cut down the trees*

### Reducing speed

*Consider a variable speed sign (like Rapid Creek markets - 40/70 used for busy times.*

*Reduce speed during events to 40kph or 20kph*

### Safety

*I believe it will be dangerous if parking bays are installed as it is an s bend and reverse parking is not easy to do and it will create accidents.*

*Keep yellow line on Oval side with formal bays on Botanic Gardens side. There should be parking on only one side as it is very difficult to pass other cars when there is parking on both sides. It is also dangerous with pedestrians dashing across the road from the Oval side*

### Other

*You don't police the area as it is, so why are you proposing to change when everyone knows you will do nothing about*

*Enforce illegal parking. I've never had a problem parking there but am frustrated but illegal parkers when I do the right thing. Biggest offenders are 4WDs that park (and damage) footpaths and verges.*

*Don't take road space for parks, ensure road is widened. Ideas like this should be undertaken Darwin wide. Parking is terrible in CBD.*

*Signs prior to Chin Quan indicating not to park on bike/path track*

## **MEETINGS, DISCUSSIONS, EMAILS WITH STAKEHOLDERS SUMMARY**

There was a range of opinions from the key stakeholders. Several preferred the 'do nothing' option, or to have formalised parking with the addition of bollards for safety and prevention of parking on the verge. The need for improved path access on the Botanic Garden side was also raised.

### **Northern Territory Police, Fire and Emergency Services**

(Two NT Police representatives attended meeting)

- Road closures for events in this area are likely to be more frequent in the current global climate of attacks in public places

- Bollards on the paths would prevent parking across paths as well as improving public safety (in the event of vehicle attack)
- Representative 1 – expressed concern that in his opinion road is not wide enough for marked parking bays on both sides and that he would not like to see this option unless road was widened and bollards put in place. Safety concern about people walking out between parked cars.
- Representative 1 – opinion that if Council is limited to only changing signs and line markings then his preference would be to leave the road as it is.
- Representative 2 – preferred the option of formalised parking on one or both sides of the street because of the traffic calming affect although he would also like to see bollards going in as part of this change.

## **AFLNT**

(Two representatives from AFLNT attended meeting)

- Neither of the two representatives had major issues with any of the options presented.
- Their concerns regarding the ad hoc parking on the verge (across shared paths) of some people during football games are that:
  - People are not paying which is unfair to paying spectators
  - Drinking alcohol can cause problems and police have had to attend at times
  - Vehicles parked this way have to reverse out onto road which causes safety concerns
- Both considered additional parking in the area to be a desirable outcome.
- Neither felt that volume of traffic in this area was of concern
- Advised that they felt that the yellow line 'partially works' in that it does stop some, but not all, from parking here. They suggest it doesn't work as it is not policed.
- Both have a preference for Council to screen the fence line with shrubs to visually block the area and then to have marked parking bays to allow for extra formal parking.
- Option for formalised bays on both sides of the street combined with screening of the oval fence line is their preferred option. (Suggested that formalised bays on the Oval side may reduce parking over the paths.)
- Suggestion made that installing bollards would prevent parking on the footpaths.
- AFLNT have been advised (19/7/2017) that Council will not consider screening of the Gardens Oval fence line at this stage.

## **George Brown Botanic Gardens**

- Slight preference for 'do nothing' option 4. Also thinks that option 1 – to cover the 'no parking' signs during events to allow parking (with no formalised bays) is also a good option.
- Issue with parking on GBBG side because the path diverges from the kerb and people eg. Parents with prams, end up walking along the road or having to walk through trees & garden beds.

- There is a plan to create additional parking on site at GBBG in the George Brown Darwin Botanic Gardens Draft Visitor Experience Development Plan
- Comments that some events are leaving the GBBG and that big events have road closures

### **Dept of Infrastructure, Planning and Logistics, NTG**

- Currently buses rarely use Gardens Road and there are no plans to increase usage.
- Large special events (eg Bass in the Grass) will need space to stop a few buses on the Gardens side

### **Gardens Park Golf Links**

- Preference to leave parking as it is
- Lighting needs improving in the area
- Currently Golf links car park gets used for visitors to events in the area
- Would like better traffic management around road closures especially in relation to Golf Links

### **Cricket NT**

- No major concerns
- Potential issues if proposed lighting of Gardens Oval affects numbers using oval in busy periods
- One issue – cricket balls regularly fly over fence and can hit parked cars

### **Waratahs Football Club**

- Considers parking along the yellow line to be dangerous as the road is too narrow.
- Would like Council to address the 'fence issue'. That is, they would like Council to cover the fence with opaque screening so that spectators cannot 'park and watch'
- As far as major events are concerned, this is not a big issue for them as their season finishes prior to dry season main events

### **City of Darwin Work Zone Traffic Officer**

- Concerns for public safety during events if parking on both sides were formalised (regarding speed and width of the road along the bends with parallel reverse parking)

### **Disability Advisory Committee – City of Darwin**

- Would like to see improved access along paths but they are more concerned with bigger issues for people with limited mobility:
  - Not enough disabled parks especially during busy events.
  - During road closures vehicles with disabled drivers / passengers have at times been denied access to parks

## 7. CONCLUSION

This report provides the feedback from the community consultation about on-street parking along Gardens Road, The Gardens.

It should be noted that this section of road gets closed for major events and in the current climate it is likely that there will be an increase in road closures. (Therefore this parking review is most relevant for small to medium events and is less relevant for major events when the area will be closed.)

When presented with four options, respondents' most preferred option was to have formalised bays on both sides of Gardens Road. (46% of survey respondents) The next preference was for formalised bays on one side, along the Botanic Gardens (27%).

The benefits of formalised parking on both sides are considered to be:

- decreased likelihood of parking across footpaths
- increased parking spaces,
- traffic calming due to some congestion

There have been several concerns raised with this option:

- safety concern around the difficulty of reverse parking on bends in the road,
- safety concerns around people stepping out between parked cars at busy events
- speed limit along this road

Installation of bollards has been suggested by several key stakeholders (NT Police, AFLNT) as an important element to improve public safety and to reduce parking on footpaths.

The second preference was for formalised bays on one side of the street only. (The option provided by Council was for this to be on the Botanic Gardens side.) One drawback with this option is that it may not reduce the incidence of parking across the shared paths on the Gardens Oval side, unless additional measures were considered, such as bollards.

From the feedback received, Council should also consider improving access to the footpaths along the Botanic Gardens side if formalised bays are installed on that side.

If formalised bays are put in on one or both sides then disabled parking bays should also be considered.

Further investigation is recommended because although the largest group of respondents preferred *Option 3*, there were concerns raised by stakeholders including the Northern Territory Police, Fire and Rescue Services.

To reiterate, consideration should be given to the following:

- Installation of bollards to prevent vehicles from parking over the verge to improve public safety in key areas.

- Variable speed limits for busy times
- Improving the accessibility of the path on the Botanic Gardens side. Changing the path so that it can be accessed from the on-street parks could involve removal of one or more frangipani trees from this area.
- Disabled parking bays to be included if formalised bays are created

Therefore the recommendation of this Community Consultation report is for Council to undertake further investigation into *Option 3: Formalise parking on both sides of Gardens Road*.

# Appendix I

## Methods and Materials for Consultation

- Information flyer (to local residents, visitors to the area, general)
- Information flyer distribution map
- City of Darwin website
- Social media
- eNewsletter
- NT News stories through CoD one page advertorial
- Discussion on local radio through Lord Mayor segments
- Survey Questions

### Information flyer distribution map





Feedback  
closes  
7 July.

## Parking on Gardens Road

Events around the Botanic Gardens create pressure on parking along Gardens Road. Current informal parking in this area is causing some issues. City of Darwin is looking to improve the on-street parking and is considering several options.

***We want your feedback. Tell us which option you prefer and why.***

### What are the Issues?

- Current informal (ad hoc) parking creates safety and access issues particularly for people with reduced mobility.
  - some vehicles are parking on shared paths creating issues for path users
  - there is disorderly parking which can reduce the number of parks
  - some vehicles are parking illegally on the yellow line on the Gardens Oval side of the road
- Area attracts large number of visitors for major events creating pressure on existing parking.

### What are the parking options? (see images over the page)

#### **OPTION 1: Change yellow line to signage**

Remove yellow line on Oval side and replace it with 'No Parking' signs. For major events these signs could be covered allowing informal parking when needed.

#### **OPTION 2: Formalise bays - one side**

Formalise parking by creating parking bays (approx 30 bays) on the Botanic Gardens side near Gilruth Avenue. (Parking in bays would be free of charge.)

Remove yellow line on Oval side and replace it with 'No Parking' signs. For major events these signs could be covered allowing informal parking when needed.

#### **OPTION 3: Formalise bays - both sides**

Formalise parking by creating parking bays (approx 90 bays) on both sides of Gardens Road. (Parking in bays would be free of charge.)

#### **OPTION 4: No change**

Leave the on-street parking as it is. Yellow line on Oval side and informal parking on Botanic Gardens side.

For more information on these options and to take the survey go to

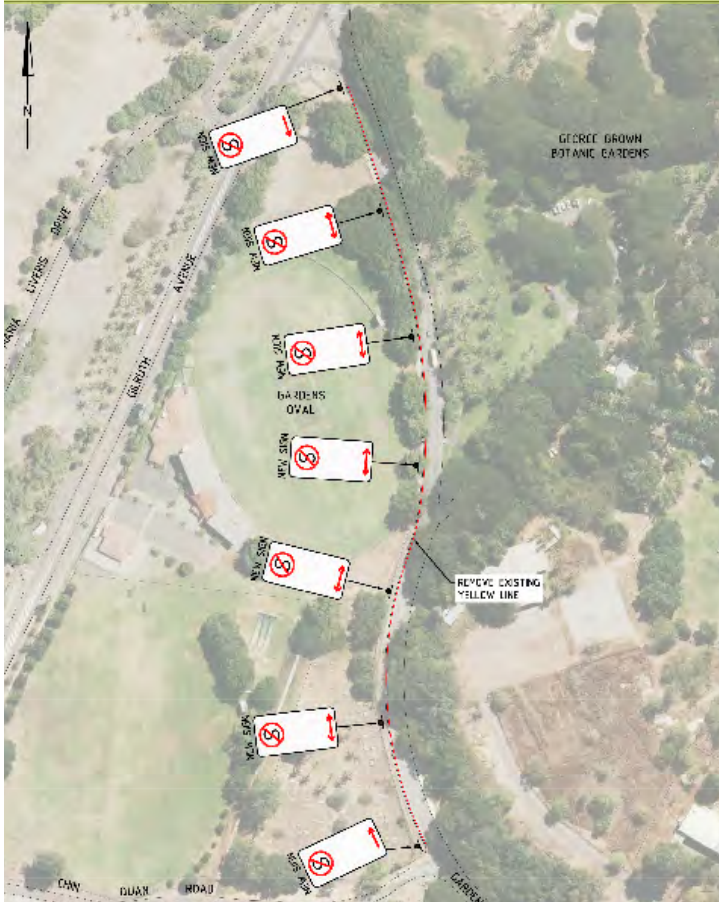
**[darwin.nt.gov.au/haveyoursay](http://darwin.nt.gov.au/haveyoursay)**

or contact Council's Communication and Engagement Officer on 8930 0194

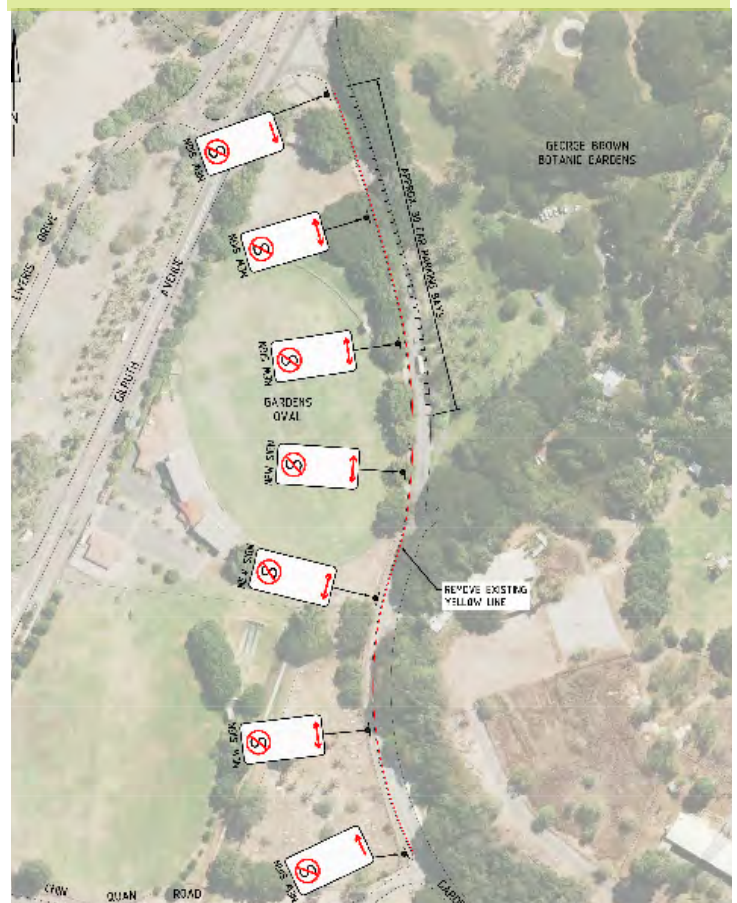




### Option 1 - Change yellow line to signage



### Option 2 - Formalise bays on one side



### Option 3 - Formalise bays on both sides

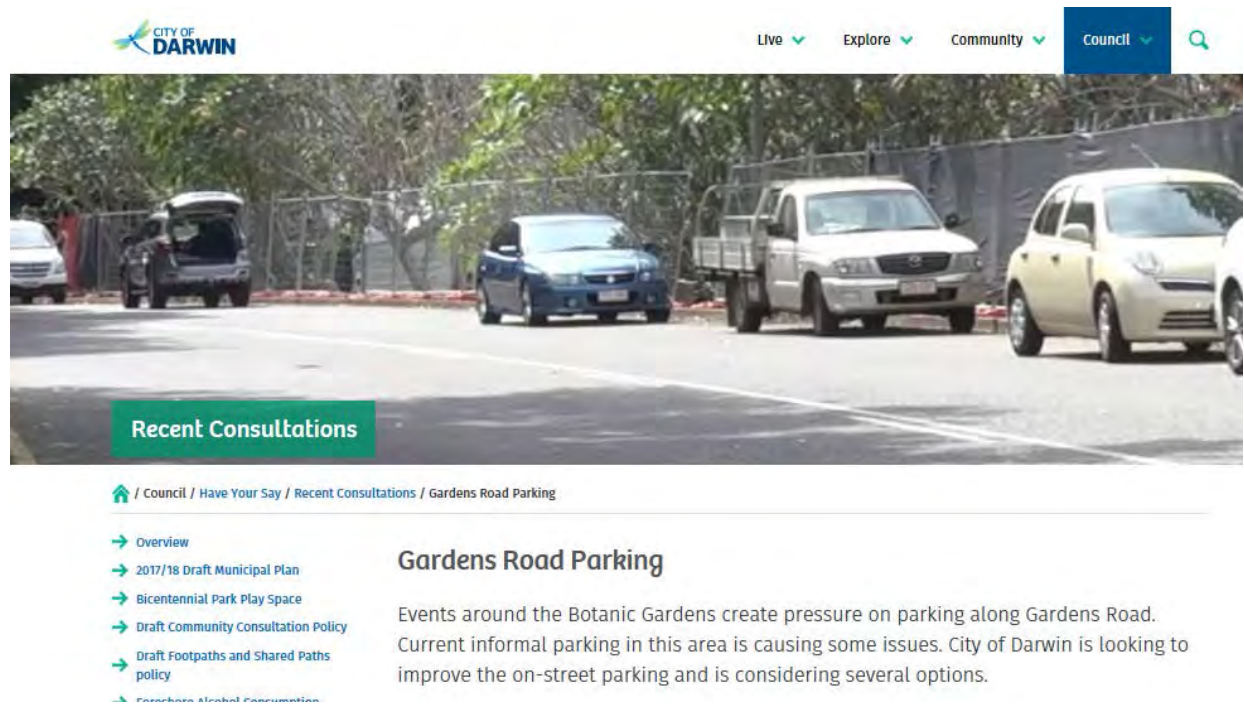


### Option 4 - No Change





## City of Darwin Webpage



The screenshot shows the City of Darwin website. At the top left is the City of Darwin logo. To the right is a navigation menu with 'Live', 'Explore', 'Community', and 'Council' (highlighted in blue) with dropdown arrows. A search icon is also present. Below the navigation is a large image of a parking lot with several cars. A green banner at the bottom of the image reads 'Recent Consultations'. Below the image is a breadcrumb trail: 'Home / Council / Have Your Say / Recent Consultations / Gardens Road Parking'. To the left of the main content is a list of links: 'Overview', '2017/18 Draft Municipal Plan', 'Bicentennial Park Play Space', 'Draft Community Consultation Policy', 'Draft Footpaths and Shared Paths policy', and 'Seachang Alcohol Consumption'. The main content area has the heading 'Gardens Road Parking' and a paragraph: 'Events around the Botanic Gardens create pressure on parking along Gardens Road. Current informal parking in this area is causing some issues. City of Darwin is looking to improve the on-street parking and is considering several options.'

<https://www.darwin.nt.gov.au/council/have-your-say/recent-consultations/gardens-road-parking#accordion-0-0>

## E-newsletter story



The graphic features a photograph of a street with cars parked along the side, framed by a teal border. Below the photo is the text: 'Have your say: Gardens Road. City of Darwin is looking to improve parking on Gardens Road. We'd love to hear your thoughts so jump online and have your say. The consultation period closes on Friday 7 July. [Have your say](#)'

## City of Darwin Facebook post

 City of Darwin added 3 new photos.  
June 13 at 11:21am · Darwin · 🌐

What do you think of the parking on Gardens Road? Events in this area create pressure on parking. Current informal parking in this area is causing some issues. We are looking to improve the on-street parking by considering several options, and we want to know what you think. Visit <https://www.darwin.nt.gov.au/.../open-co.../gardens-road-parking> to have your say today.



 Like  Comment  Share 

 You and 8 others Chronological™

1 share 4 Comments

## NT News – City of Darwin Advertorial

citizens reporting lost information please visit  
pets who have escaped darwin.nt.gov.au.  
due to the loud fireworks.

### Have your say: Gardens Road

CITY of Darwin is Council is seeking your  
looking to improve on-view on four possible  
street parking on Gardens parking options. Please  
Road, The Gardens and have your say on which  
would like your feedback. option you prefer.

Events at George Brown The consultation period  
Botanic Gardens and closes on Friday 7 July.  
Mindil Beach throughout Please visit our website  
the year attracts large at darwin.nt.gov.au/  
numbers of visitors. This haveyoursay for more  
creates safety and access information and to provide  
issues for people with your feedback.  
reduced mobility.

Did you know..  
Metal cans are 100% recyclable.

WATER  
trop  
the  
Cit  
enc  
to r  
yea  
inst  
Rap  
Mar  
the  
inst  
wee  
Th  
Pro  
Rap  
Mar  
Jun  
star  
Wat  
A  
exp  
Sat  
Lir  
ava  
som  
for  
Tov

## Radio discussion through Lord Mayor segment

### **Woolf recalls her interview with Lord Mayor of Darwin Katrin...**

 **MIX 104.9, Darwin** hosted by **Katie Woolf**  
2 mins 54 secs - ID: X00070705131

13 Jun 2017 10:07 AM



Woolf recalls her interview with **Lord Mayor of Darwin Katrina Fong Lim** on the consultation process taking place on Gardens Road regarding parking. She adds that AFLNT and Cricket NT have called for consultation on lighting for a proposed new light sporting facility to the oval. She reads out a statement from AFLNT CEO Michael Solomon on the need for a solution to grow sport in the NT. She adds that NT Cricket CEO Troy Watson has also called for more room for sporting events.



## Gardens Road Parking

### Gardens Road Parking Survey

Events around the Botanic Gardens create pressure on parking along Gardens Road. Current informal parking in this area is causing some issues. Current informal (ad hoc) parking creates safety and access issues particularly for people with reduced mobility.

City of Darwin is looking to improve the on-street parking and is considering several options.

We want your feedback. Please read the fact sheet or information on the webpage and tell us which option you prefer and why.

1. Which best describes you? (one or more)

- I am a local resident (within 1km)
- I park in this area along, or near, Gardens Road
- I visit this area
- I walk on the footpaths along Gardens Road
- I use a pram, wheelchair or other mobility device on the footpaths along Gardens Road
- I cycle on the footpaths along Gardens Road
- Other (please specify)

2. How often do you park, or consider parking, in the vicinity of Gardens Road to attend:

	Weekly	Monthly	Sometimes (a few times a year)	Rarely (0-1 times a year)	Never
Major events such as concerts and festivals	<input type="checkbox"/>	<input type="checkbox"/>	<input type="checkbox"/>	<input type="checkbox"/>	<input type="checkbox"/>
Sporting events at Gardens Oval	<input type="checkbox"/>	<input type="checkbox"/>	<input type="checkbox"/>	<input type="checkbox"/>	<input type="checkbox"/>
George Brown Botanical Gardens	<input type="checkbox"/>	<input type="checkbox"/>	<input type="checkbox"/>	<input type="checkbox"/>	<input type="checkbox"/>
Mindil Market	<input type="checkbox"/>	<input type="checkbox"/>	<input type="checkbox"/>	<input type="checkbox"/>	<input type="checkbox"/>
Other	<input type="checkbox"/>	<input type="checkbox"/>	<input type="checkbox"/>	<input type="checkbox"/>	<input type="checkbox"/>

If you marked other, 'other' please specify

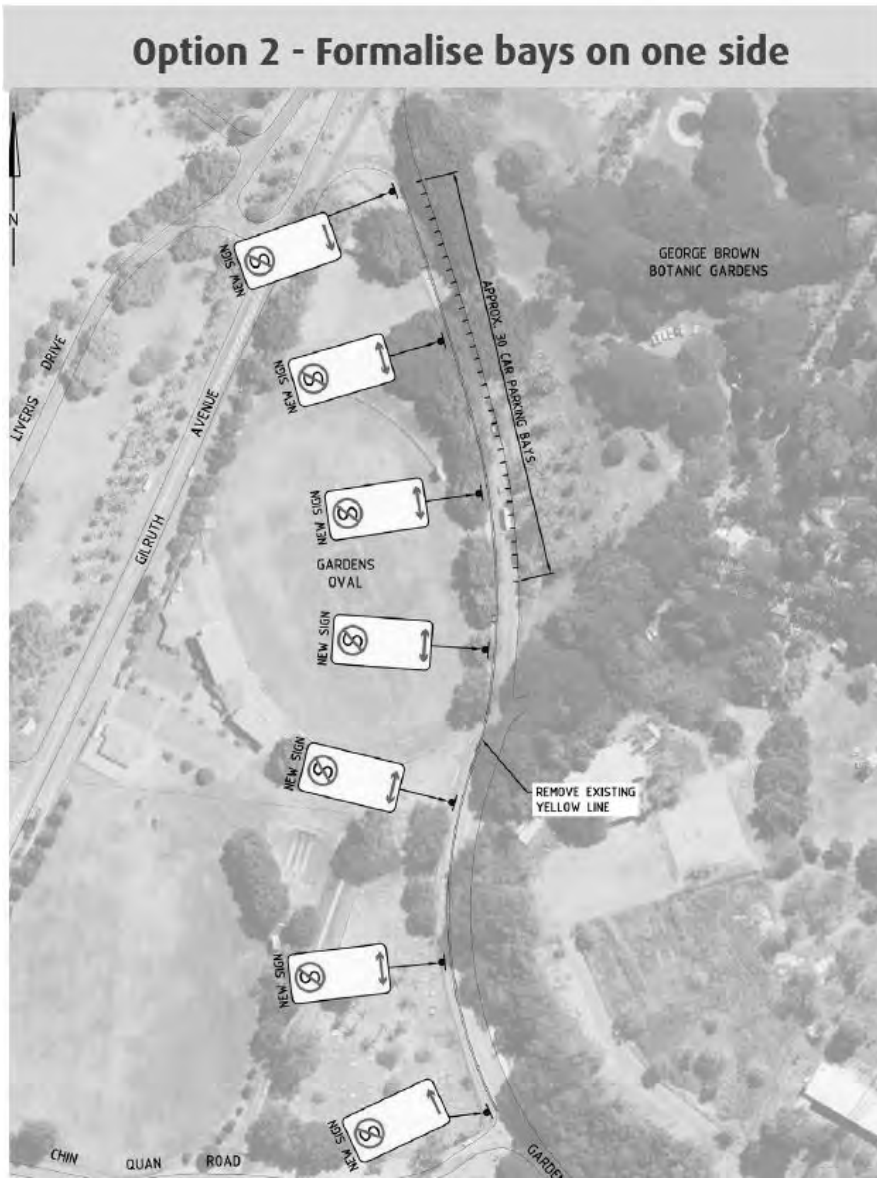
Scroll through the four options before answering the next questions.

Option 1 - Remove the yellow line on the oval side and replace it with 'no parking' signs. For major events these signs could be covered allowing informal parking when needed.



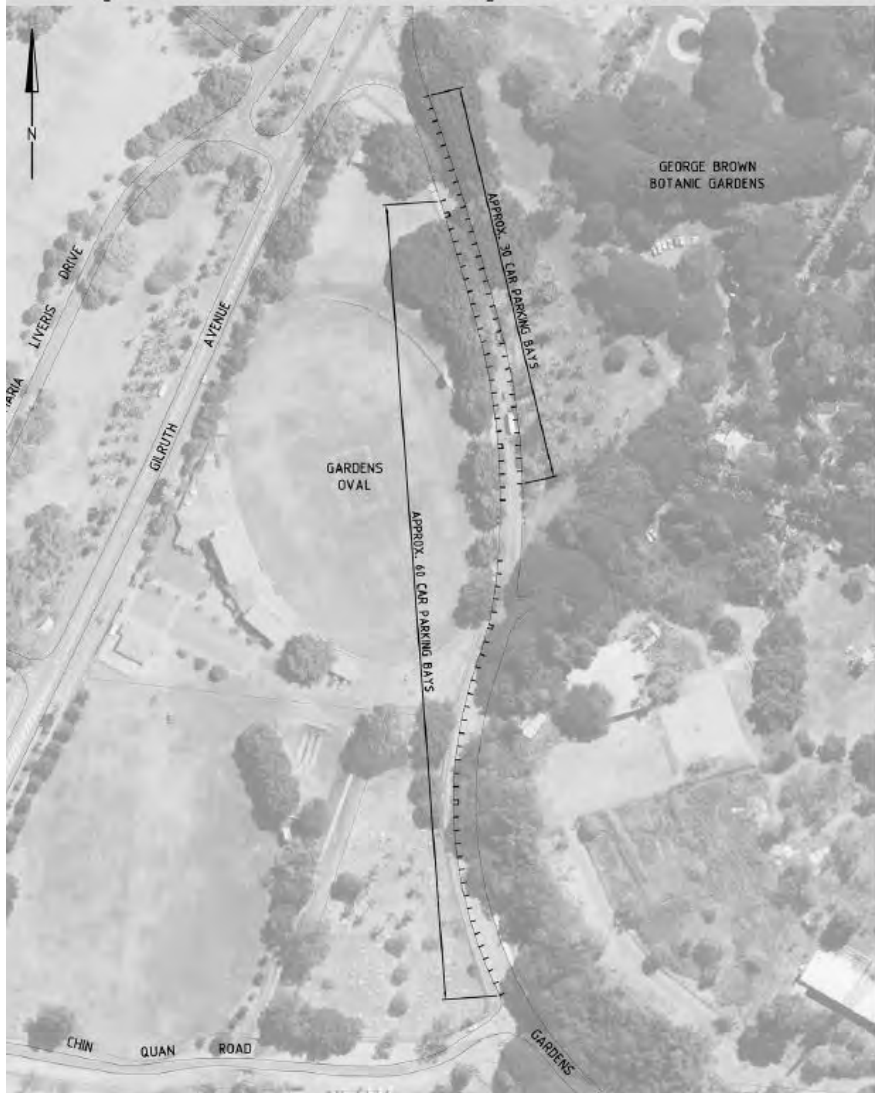


Option 2 - Formalise parking by creating parking bays (approx 30 bays) on the Botanic Gardens side near Gilruth Avenue. Remove yellow line on the oval side and replace it with 'No Parking' signs. For big major events these signs could be covered allowing informal parking when needed.



Option 3 - Formalise parking by creating parking bays (approx 90 bays) on both sides of Gardens Road.

### Option 3 - Formalise bays on both sides



Option 4 - Leave the on-street parking as it is. Yellow line on oval side and informal parking on Botanic Gardens side.

### Option 4 - No Change



3. Which of the four parking arrangement options to you prefer?

- Option 1 - Change yellow line to signage
- Option 2 - Formalise bay on one side
- Option 3 - Formalise bays on both sides
- Option 4 - No change
- Other (please specify)



4. Have you experienced any issues with accessing the paths on either side of this section of Gardens Road?

- No
- Yes, once
- Yes, more than once

If yes, please describe your issue

5. Do you have any comments to add?

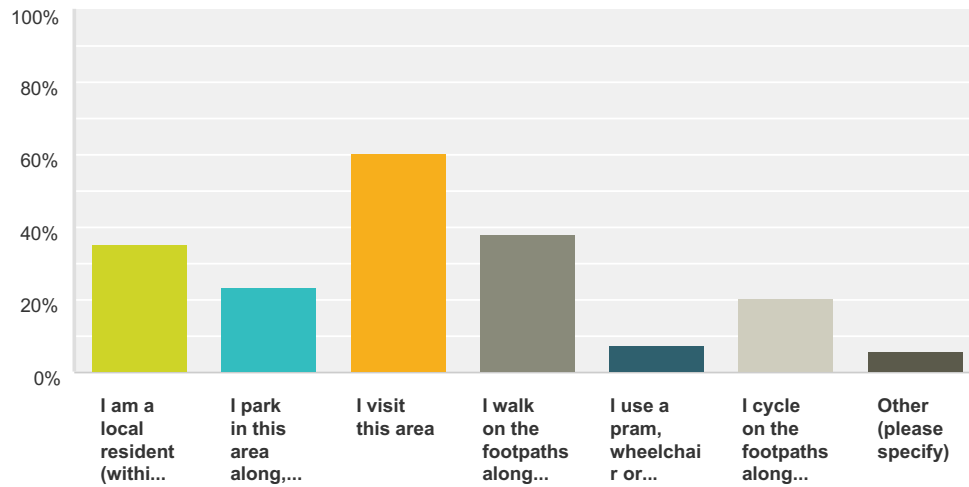
6. If you would like to be kept informed about this consultation please provide your email.

7. If you would like to be sent information about future Council consultations please provide your email.

**Thank you for taking the time to give us your feedback!**

### Q1 Which best describes you? (one or more)

Answered: 68 Skipped: -1



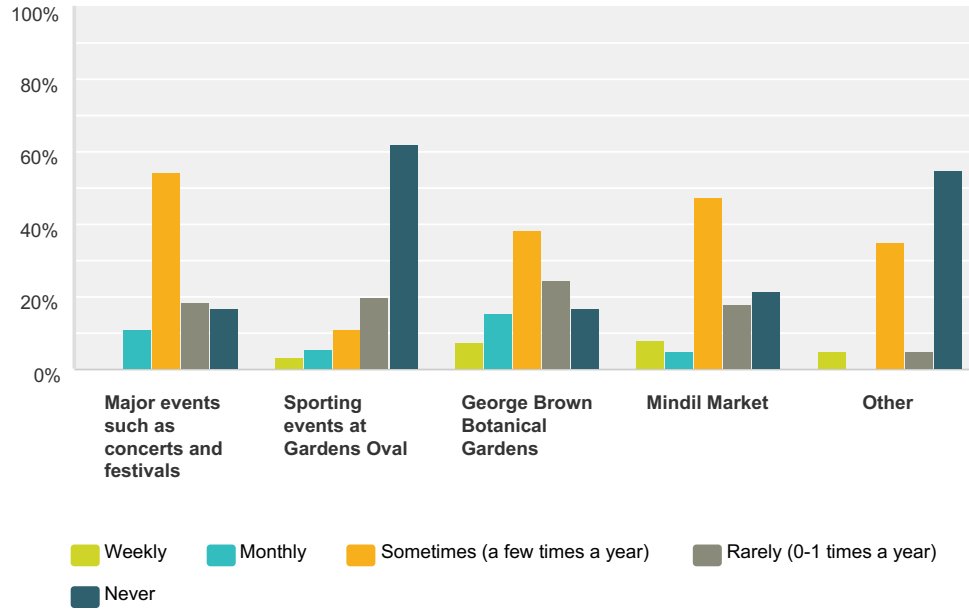
Answer Choices	Responses
I am a local resident (within 1km)	35.29% 24
I park in this area along, or near, Gardens Road	23.53% 16
I visit this area	60.29% 41
I walk on the footpaths along Gardens Road	38.24% 26
I use a pram, wheelchair or other mobility device on the footpaths along Gardens Road	7.35% 5
I cycle on the footpaths along Gardens Road	20.59% 14
Other (please specify)	5.88% 4
<b>Total Respondents: 68</b>	

#	Other (please specify)	Date
1	I drive through along this road on a regular basis	6/13/2017 3:51 PM
2	I have young children.	6/13/2017 3:15 PM
3	I work nearby	6/13/2017 11:34 AM
4	I work in this area	6/8/2017 2:33 PM

# Gardens Road Parking

## Q2 How often do you park, or consider parking, in the vicinity of Gardens Road to attend:

Answered: 68 Skipped: -1



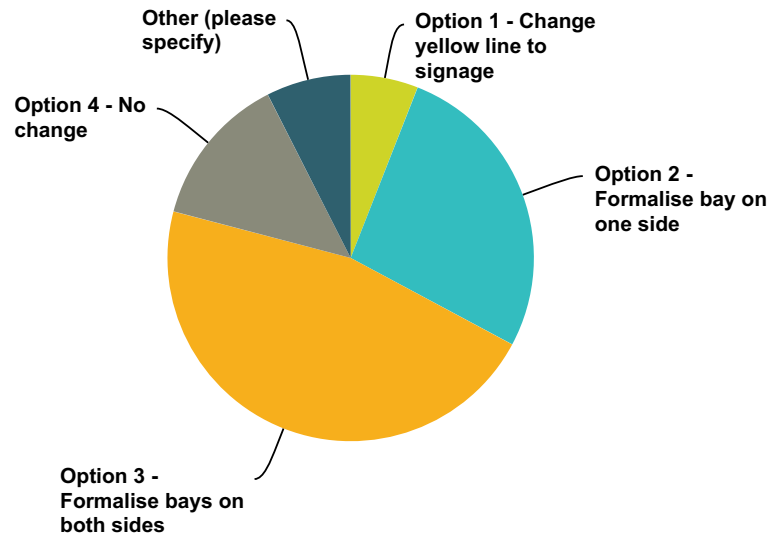
	Weekly	Monthly	Sometimes (a few times a year)	Rarely (0-1 times a year)	Never	Total Respondents
Major events such as concerts and festivals	0.00% 0	10.94% 7	54.69% 35	18.75% 12	17.19% 11	64
Sporting events at Gardens Oval	3.64% 2	5.45% 3	10.91% 6	20.00% 11	61.82% 34	55
George Brown Botanical Gardens	7.69% 5	15.38% 10	38.46% 25	24.62% 16	16.92% 11	65
Mindil Market	8.20% 5	4.92% 3	47.54% 29	18.03% 11	21.31% 13	61
Other	5.00% 1	0.00% 0	35.00% 7	5.00% 1	55.00% 11	20

#	If you marked other, 'other' please specify	Date
1	exercise in the vicinity	6/13/2017 12:43 PM
2	I never plan to park on Gardens Rd. For major events I go to either the Geranium St entrance and hope for street parking there, or go to the Mindil Beach car park. Parking on Gardens Road during major events should be reserved for parents with prams, disabled parking etc.be reserved for	6/11/2017 7:51 PM

## Gardens Road Parking

### Q3 Which of the four parking arrangement options to you prefer?

Answered: 67 Skipped: 0



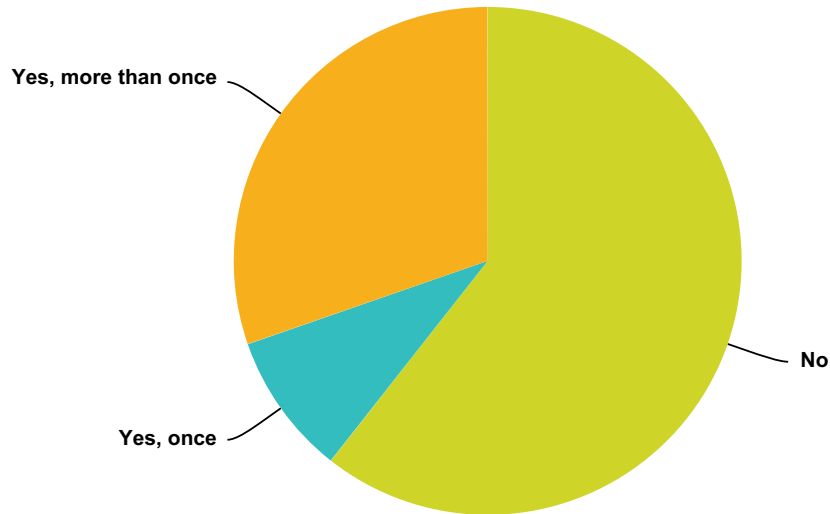
Answer Choices	Responses	
Option 1 - Change yellow line to signage	5.97%	4
Option 2 - Formalise bay on one side	26.87%	18
Option 3 - Formalise bays on both sides	46.27%	31
Option 4 - No change	13.43%	9
Other (please specify)	7.46%	5
<b>Total</b>		<b>67</b>

#	Other (please specify)	Date
1	Keep yellow line on Oval side with formal bays on Botanic Gardens side. There should be parking on only one side as it is very difficult to pass other cars when there is parking on both sides. It is also dangerous with pedestrians dashing across the road from the Oval side.	6/22/2017 5:04 PM
2	Enforce illegal parking. I've never had a problem parking there but am frustrated but illegal parkers when I do the right thing. Biggest offenders are 4WDs that park (and damage) footpaths and verges.	6/13/2017 5:27 PM
3	promote parking along chin quan road	6/13/2017 12:43 PM
4	Build an off road car park	6/13/2017 12:01 PM
5	There needs to be more off street parking options. There is a huge open area between Gardens Rd and Channel nine that could be developed into a carpark that is only opened when there are events on. This would stop people parking on the yellow line next to Gardens Oval (if it's dangerous to park there why would be allowed to some times but not others?) The carpark could be opened only for events and perhaps the open drain next to the footpath could be covered over to make a larger and safer path for pedestrians, prams, wheelchairs etc to get to the Gardens safely and comfortably. The carpark could be kept closed after major events to avoid anti social behaviour.	6/10/2017 10:27 AM

## Gardens Road Parking

### Q4 Have you experienced any issues with accessing the paths on either side of this section of Gardens Road?

Answered: 66 Skipped: 1



Answer Choices	Responses	
No	60.61%	40
Yes, once	9.09%	6
Yes, more than once	30.30%	20
<b>Total</b>		<b>66</b>

#	If yes, please describe your issue	Date
1	during festivals/converts/Mindle market nights the road is often congested and it appears (4wds in particular) park wherever they wish	7/8/2017 4:51 PM
2	Cars parked on the grass and footpath on the road near the golf course. This is where i park if i am not walking. It gets a bit hectic if people are trying to go against the traffic, but you can't legislate for stupidity. If you could make it that if you park on the left (ie golf course side) all must go left, and go past the golf course to get out, and if you park on the right, all must keep going right (ie continue up towards the city) that may address some of the messy traffic jams that occur.	7/1/2017 12:48 PM
3	The main issue is that the way the pedestrian lane has been marked can force people onto the rough edge of the path - that is, on the Golf Links side of the road.	6/22/2017 5:04 PM
4	Have had to squeeze past vehicles on the path, but it doesn't really bother me	6/17/2017 3:22 PM
5	Opposite the Botanical gardens entrance the footpath narrows, and when cars park on the verge, access is impeded. Further, there is no footpath on the eastern side of the road from the botanical gardens driveway for about 10m until the footpath commences.	6/16/2017 3:34 PM
6	The problems are not so much in the areas being considered but the area on the SW side of Gardens Rd on the city side of Chin Quan Rd where cars constantly park across the bike/foot path. There needs to be a physical barrier to keep cars off that path.	6/16/2017 2:54 PM
7	Occasionally. Why reduce parking spaces unnecessarily? Disabled motorists can park in designated spaces within the gardens if visiting there and ditto at the markets. If you really must, on the days when heavily used, reduce the speed to 50kph but don't muck it up please!	6/14/2017 5:28 PM

## Gardens Road Parking

8	cars parked haphazardly with no consideration to other drivers or pedestrians.	6/14/2017 11:01 AM
9	Cars parking on the Oval side, setting up chairs to watch the AFL for free instead of entering the ground	6/14/2017 6:09 AM
10	Never had a problem finding a park but difficulty getting back to the gardens with a pram because of vehicles blocking paths (Parked illegally)	6/13/2017 5:27 PM
11	Vehicles blocking the footpath and view of oncoming vehicles	6/13/2017 4:27 PM
12	When crossing the road sometimes there are no gaps big enough from the cars to get onto the footpath (if you have a pram or stroller). There are also no defined path crossings (as in easy access up the gutter) for people with mobility issues.	6/13/2017 3:15 PM
13	When walking along the road unthinking motorists park to get a close a possible since they are too lazy to walk.	6/13/2017 2:09 PM
14	the footpath near the botanical gardens ends, forces you to weave around cars close to the entrance.	6/13/2017 12:43 PM
15	There was so much traffic	6/13/2017 10:16 AM
16	When parking occurs on the oval side, there are always vehicles half on the kerb, or more, restricting access	6/13/2017 9:36 AM
17	pedestrian access blocked to get to Botanic Gardens, forced to walk on road	6/11/2017 7:51 PM
18	Often, cars park anywhere the like currently formalised bays will help this, it is not a major traffic road other than access and parking during big events, so the congestion due to parking manouvres will be acceptable.	6/8/2017 6:31 PM
19	Particularly on bike/path coming down hill towards Chin Quan...cars park all over the path blocking the bikes and path f ropedestrians and with prams forcing people into or across road	6/8/2017 2:33 PM

## Gardens Road Parking

### Q5 Do you have any comments to add?

Answered: 32 Skipped: 35

#	Responses	Date
1	I believe further accessible parking is required. As is the consideration of road closures limiting access during events.	7/13/2017 10:39 AM
2	I think we require more local busses for big events, and not just at the botanic gardens but waterfront, esplanade, nightcliff/rapid creek markets etc. I know many people from out of town that recently attended the NRL game at Mararra and V8's that utilised and enjoyed the public bus option	7/8/2017 4:51 PM
3	events like the DSO that attract the elderly, they should be able to have priority parking or have drop off available to them upon presentation of a seniors card.	7/5/2017 1:26 PM
4	At the Italian festival a police lock up van which had mounted the kerb to park in the garden bed on the gardens side became bogged - this is exactly why we think there needs to be some rationalisation and increased legal parking options in the area.	7/4/2017 7:41 AM
5	I am pleased you are thinking about this issue. Thank you.	7/1/2017 12:48 PM
6	You need to add another car parking area maybe top end near light cars already cars park there on big events. Not good shutting off gardens rd traffic was a night mare tonight cars were parked on the footpath on the main rd. About time you made the area across from the footy oval a car park it is no more walking in mud in the wet season	6/24/2017 9:59 PM
7	There should be no change as these stress are hardly blocked besides major events and even then the road is usually closed and people can walk along the road.	6/23/2017 2:27 PM
8	In general the line marking on Gardens Road is very poor and when wet very hard to see and many motorists seem to drive too fast there. The speed limit should be 50 between the Gilruth Avenue lights and the Cavanagh Street lights.	6/22/2017 5:04 PM
9	Bays on both sides offer the best opportunity to maximise car parking during Mindil markets and other events. The ad-hoc parking arrangements do not maximise space. The road should also be 40km/h during events (say, an hour either side of sunset for Mindil), which will slow down traffic and account for parking manoeuvres.	6/19/2017 7:55 PM
10	Shared path beside cemetery is in poor condition	6/19/2017 4:47 PM
11	I prefer option 3 because this are provides a significant quantity of car parking that should be available for the majority of time, and erecting no standing signs makes this impossible, when the issue is for a minority of time. I do not believe that the signs will be bagged most of the time. The website also has the wrong pictures for option 3, but the flyer is correct.	6/16/2017 3:34 PM
12	We don't need more car parks in the immediate area of the Gardens; we need to encourage people to use alternate means or to park in the large parking area that is set up for Mindil Markets. It isn't very far to walk.	6/16/2017 2:54 PM
13	Be sensible in deciding.	6/14/2017 5:28 PM
14	It is such a pretty drive, please don't change it. Why not encourage people to park at Mindel.	6/14/2017 2:45 PM
15	you don't police the area as it is, so why are you proposing to change when everyone knows you will do nothing about it	6/14/2017 6:09 AM
16	The few events that create parking issues are mainly limited to the dry season. The cost of any of the possible new options would seem wasteful. Assistance from Council officers/police to provide an orderly support for events. Cost could covered from a levy on event tickets.	6/13/2017 8:41 PM
17	Thanks for looking at this :)	6/13/2017 5:27 PM
18	No	6/13/2017 3:51 PM
19	I am not sure adding car parks to the road is the answer either. Perhaps better utilising the Mindle Beach car park is better with better pedestrian access.	6/13/2017 3:15 PM
20	Formalising the spots totally makes most sense. Banning parking seems over top, and the suggestion to perhaps cover signage during major events is plain silly - gives the organisers another thing to think about, and leaves plenty of room for misinterpretation.	6/13/2017 2:14 PM
21	Darwin does not have enough trees and by electing for option 1 (preference is really option 4) this minimises the impact on trees and on this wonderful green corridor in our area. At least option 2 provides extra parking in the case of events and can be controlled.	6/13/2017 2:09 PM

## Gardens Road Parking

22	Perhaps parking issues should have been planned 20 years ago. Consider a variable speed sign (like Rapid Creek markets - 40/70) used for busy times. Look to more parking among the trees beside the golf course. Perhaps a high-rise car park could be built in Salonika Street to assist in this area with primary use being for city workers that then catch a shuttle bus.	6/13/2017 1:49 PM
23	Don't take road space for parks, ensure road is widened. Ideas like this should be undertaken Darwin wide. Parking is terrible in CBD.	6/13/2017 12:14 PM
24	Considering the events happening frequently at the premise, more parking bays should be provided to avoid parking at casino carpark and cause inconvenience to the patrons and employees of casino.	6/13/2017 11:34 AM
25	NO	6/13/2017 10:15 AM
26	Don't cut down any trees because the trees are cool and even though some people are to lazy to walk don't cut down the trees	6/13/2017 10:14 AM
27	N/A	6/13/2017 9:56 AM
28	I believe it will be dangerous if parking bays are installed as it is an s bend and reverse parking is not easy to do and it will create accidents.	6/13/2017 9:43 AM
29	Reduce speed during events to 40kph or 20kph	6/13/2017 9:32 AM
30	i think formalised parking on one side is better with signage so those who get in first know they just park on street. Parking on the other side would make the street too narrow for good visibility when you already have lots of pedestrians crossing from Mindil, esp at night.	6/11/2017 7:51 PM
31	Accessing the access parks inside the botanical gardens gate is a real problem during large events. Those directing traffic are not aware of parks and or often unwilling to assist those that need close parking. Of the informal parking on event days should be dedicated to accessible parking.	6/8/2017 9:37 PM
32	Signs prior to Chin Quan indicating not to park on bike/path track	6/8/2017 2:33 PM