

**DON'T LET OUR
EFFORTS GO
TO WASTE**



MULTI DWELLING BIN COLLECTION DAYS

TWICE WEEKLY WASTE COLLECTION **RED LID BIN**

| MONDAY & THURSDAY | TUESDAY & FRIDAY | |
|-------------------|------------------|-------------|
| Bayview | Alawa | Muirhead |
| Cullen Bay | Brinkin | Nakara |
| Darwin | Coconut Grove | Nightcliff |
| Fannie Bay | Jingili | Northlakes |
| Larrakeyah | Karama | Rapid Creek |
| Ludmilla | Leanyer | Tiwi |
| Parap | Lyons | Wagaman |
| Stuart Park | Malak | Wanguri |
| The Gardens | Marrara | Wulagi |
| The Narrows | Millner | |
| Tipperary Waters | Moil | |
| Winnellie | | |
| Woolner | | |

WHAT ARE MULTI DWELLINGS.

Multi dwellings (aka MUDs) include units, flats and townhouses. The bins are collected manually (not by automated trucks) from the bin compound.



Your red lid bin (general waste) is collected twice weekly. Check your suburb's collection days.



WEEKLY RECYCLING COLLECTION **YELLOW LID BIN**

| MONDAY | TUESDAY | WEDNESDAY | | |
|---|--|---|---|--|
| Cullen Bay Darwin Larrakeyah The Gardens The Narrows Tipperary Waters | Coconut Grove Fannie Bay Ludmilla Parap Winnellie | Alawa Bayview Brinkin Jingili Karama Leanyer Lyons Malak | Marrara Millner Moil Muirhead Nakara Nightcliff Northlakes Rapid Creek | Stuart Park Tiwi Wagaman Wanguri Woolner Wulagi |



Your yellow lid bin (recycling) is collected weekly. Check your suburb's collection day.

A few simple mistakes, like putting plastic bags in the yellow recycle bin, can send tons of good recycling to landfill. So recycle your thinking and learn to recycle for good.



Keep it loose



Don't bag your recycling



IT'S TIME TO RECYCLE RIGHT

IN MULTI-DWELLINGS A SIGNIFICANT AMOUNT
OF RUBBISH IS ENDING UP IN THE RECYCLING BINS.



USE THE RIGHT BIN



**PLEASE KEEP PLASTIC BAGS, FOOD SCRAPS, CERAMICS,
CLOTHING AND GARDEN WASTE OUT OF YOUR RECYCLING BIN**

Are there enough bins at your building so that residents can
find space in the right bin? If not, please let your body corporate
or agent know.



**DON'T LET OUR EFFORTS
GO TO WASTE.**



**IF IN DOUBT,
LEAVE IT OUT!**

Or put it in your
red lid bin





HOW TO USE YOUR BINS CORRECTLY

HOW TO MAKE SURE YOUR WHEELIE BINS GET EMPTIED:

- Bin compound is to be accessible and clean
- All material must be placed in the bins
- Only recyclable items go in the yellow bin
- No overflowing bins
- Close the bin lid
- Bin must not exceed **70kg**
- Council bins only



How to report a lost or stolen or damaged wheelie bin. Phone JJ Richards on **1800 290 581** or report through City of Darwin's Click and Fix App.



How to avoid flies. Our website has tips on what you can do darwin.nt.gov.au



Avoid - Avoid producing waste in the first place. For example, before buying something ask yourself 'Do I really need it.'

Reduce - Reduce the amount of waste created. For example, choose products with less packaging.

Re-use - Use things more than once or donate to an op-shop. For example, use clean ice-cream tubs to store loose items.

Recycle - The items placed in your recycling bins are turned back into raw materials to make new products.

Recover - Industry can generate energy from waste. For example, at Shoal Bay Renewable Energy Facility a gas extraction system turns waste into energy.

Dispose - As a last resort, dispose of waste in landfill.

THE WASTE HIERARCHY

- The waste hierarchy is a universally accepted guide on how to prioritise how we use, reuse and dispose of material for the best environmental outcome for now and the future
- The higher up the hierarchy you act, the better for the environment



**RECYCLE
FOR GOOD**

WHAT HAPPENS TO MY RECYCLABLES?

PURCHASING

Choose items made from recycled materials when you shop.



COLLECTION

Recyclable items are collected from your yellow-lid bin.



RECYCLING

The sorted items get processed and recycled into new materials and items.

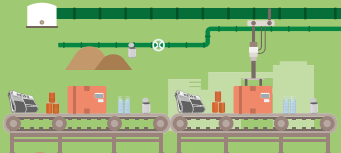


SORTING

At the recycling facility materials are sorted and bundled together.



MANUFACTURING
FACILITY



RECYCLING
FACILITY



RECYCLING INFORMATION


A GUIDE TO WHAT GOES IN YOUR RECYCLE BIN



HOW CAN YOU RECYCLE BETTER

- Use the right bin
- Take lids off containers and bottles
- Containers and packaging should not contain food or liquids
- Put items into the bin loose - not in plastic bags
- Recycle items from every room in the house

Recycle these in your yellow lid bin:

- ✓ cardboard, paper and magazines
- ✓ plastic containers marked 1-7 
- ✓ glass bottles and jars
- ✓ milk and juice cartons
- ✓ aluminium cans, steel cans and aerosols



Do the
scrunch test!



If soft plastics easily
scrunch up in your hand
then **DON'T** put them in
the recycling bin

DON'T PUT THESE ITEMS IN THE RECYCLING BIN



- ✗ ceramics
- ✗ clothing
- ✗ disposable nappies
- ✗ e-waste
- ✗ food scraps
- ✗ garden hoses
- ✗ garden waste
(take this to Shoal Bay
for mulch)
- ✗ glass and mirrors
- ✗ lightbulbs
- ✗ plastic bags
- ✗ pots and pans
- ✗ scrap metal

DID YOU KNOW...

You can drop off:

- household batteries
- print cartridges
- mobile phones

at the Civic Centre, Nightcliff Community Centre, Casuarina Library and the Recycle Shop at Shoal Bay Waste Management Facility.



Remember - worm farms and compost are a great way to recycle your organic waste.

Ewaste

Ewaste items can be dropped off at the Recycle Shop, Resources Recovery Area and The Transfer Station at Shoal Bay Waste Management Facility.

Soft plastics

Soft plastic bags can be taken to the Recycle Shop.

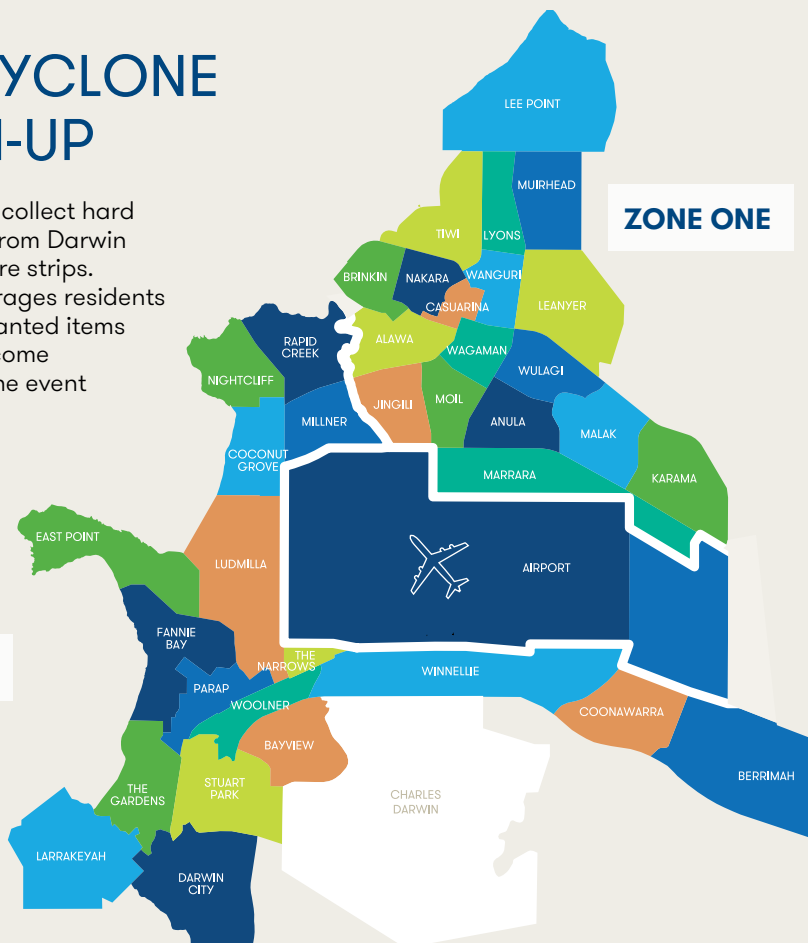
Check our website for more information darwin.nt.gov.au



PRE-CYCLONE CLEAN-UP

City of Darwin collect hard rubbish items from Darwin residents' nature strips. Council encourages residents to put out unwanted items which may become hazardous in the event of a cyclone.

ZONE TWO



WHAT YOU NEED TO KNOW

- The pre-cyclone cleanup collection takes place from August to September each year. Zone one is collected first shortly followed by zone 2. Check our website for your exact suburb collection dates.
- Place your items on the nature strip
- Group similar items together and leave a space between groups of items (this will maximise the reuse and recycling of your items)
- Keep footpaths clear and be mindful of the safety of Council workers
- Seniors and residents with a disability can call Council for assistance on 8930 0300

HOW TO SET OUT YOUR WASTE

Please separate your items into groups on the nature strip as outlined.
Up to two cubic meters of waste allowed. Equivalent to two 6x4 trailer loads.



WHAT WILL BE COLLECTED?

YES

- ✓ whitegoods
- ✓ air conditioners
- ✓ furniture/flooring
- ✓ bicycles
- ✓ toys
- ✓ computers and TVs
- ✓ scrap metal



NO

- ✗ asbestos
- ✗ flammable liquids/gas bottles
- ✗ paint/oil/chemicals
- ✗ batteries
- ✗ car parts/bodies/tyres
- ✗ commercial waste
- ✗ concrete
- ✗ garden refuse



PLEASE REMEMBER

Please remove doors from fridges for public safety



**RECYCLE
FOR GOOD**

SHOAL BAY WASTE MANAGEMENT FACILITY

WHO CAN USE THIS FACILITY?

This service is for residents of Darwin.

- You need your access tag, domestic waste only
- Vehicles less than one tonne load capacity
- House renovations must go through the commercial lane

Open every day 7am-6pm
(Christmas Day 7am-2pm)

Don't forget your access tag.



Here's how to sort your load before you head to Shoal Bay to optimise what can be reused and recycled.

1ST STOP THE RECYCLE SHOP

Reuseable furniture, bric-a-brac, books, toys, crockery, garden pots, sporting gear, TVs computers and e-waste.

2ND STOP SHOAL BAY MULCH

Palm fronds, shrubs, small tree prunings, lawn clippings, tree stumps (up to 1.5m length and 800mm diameter).

Mulch is available to purchase.

3RD STOP THE TRANSFER STATION

There are drop-off areas for the following items.

Whitegoods, scrap metal, cardboard, fluoro lights, and hazardous items (listed below).

Anything left over can go in the large skip bins.

SORT YOUR LOAD

Pack your vehicle or trailer so you can easily drop off recyclables first, then green waste followed by general waste.



RECYCLABLES



GREEN WASTE



GENERAL WASTE

1. RECYCLABLES

2. GREEN WASTE

3. GENERAL WASTE



TAKE HOUSEHOLD HAZARDOUS WASTE TO SHOAL BAY TRANSFER STATION

The safest way to dispose of these is at the Shoal Bay Transfer Station:

- gas bottles (max 2 x 9.5kg)
- car batteries
- paint (max 10 litres)
- oils (max 10 litres) and oil filters
- chemicals (all liquids up to 10 litres)

Please contact Council for advice.



**RECYCLE
FOR GOOD**

WASTE AND RECYCLING EDUCATION CENTRE



WASTE AND RECYCLING EDUCATION CENTRE

Council's education officer conducts school tours of the Shoal Bay Waste Management Facility.

The tours are fun, educational and are focused on teaching groups how to Reduce, Reuse, Recover, to minimise the waste going to landfill.

For tour bookings contact the Waste Management Team **8930 0300**.

USEFUL CONTACTS

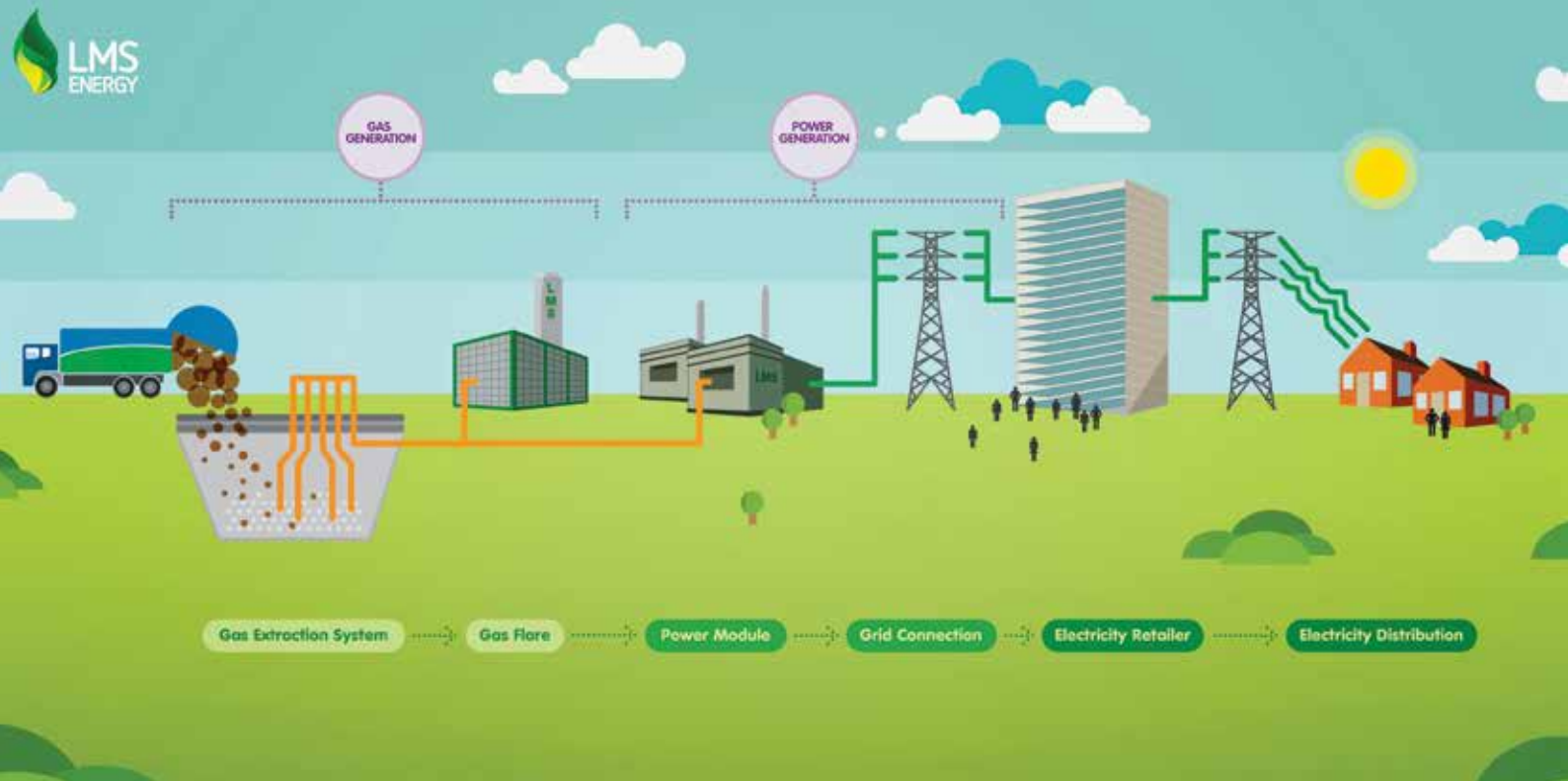
City of Darwin **8930 0300**

Shoal Bay Weighbridge
8930 0471

Shoal Bay Mulch **1300 558 449**

Shoal Bay Recycle Shop
0417 816 066

JJ Richards (Waste Contractor)
1800 290 581



SHOAL BAY RENEWABLE ENERGY FACILITY

This facility is owned and operated by Landfill Management Services (LMS) in cooperation with City of Darwin.

Opening in 2005, this facility generates 9,000 megawatt hours of renewable electricity per year which is enough to power 1,800 homes. This is a reduction of approximately 38,000 tons of greenhouse gas emissions (CO₂) a year.

The mitigation of greenhouse emissions is an important step in ensuring the disposal of Darwin's waste has the lowest possible impact on the environment.



**RECYCLE
FOR GOOD**



darwin.nt.gov.au