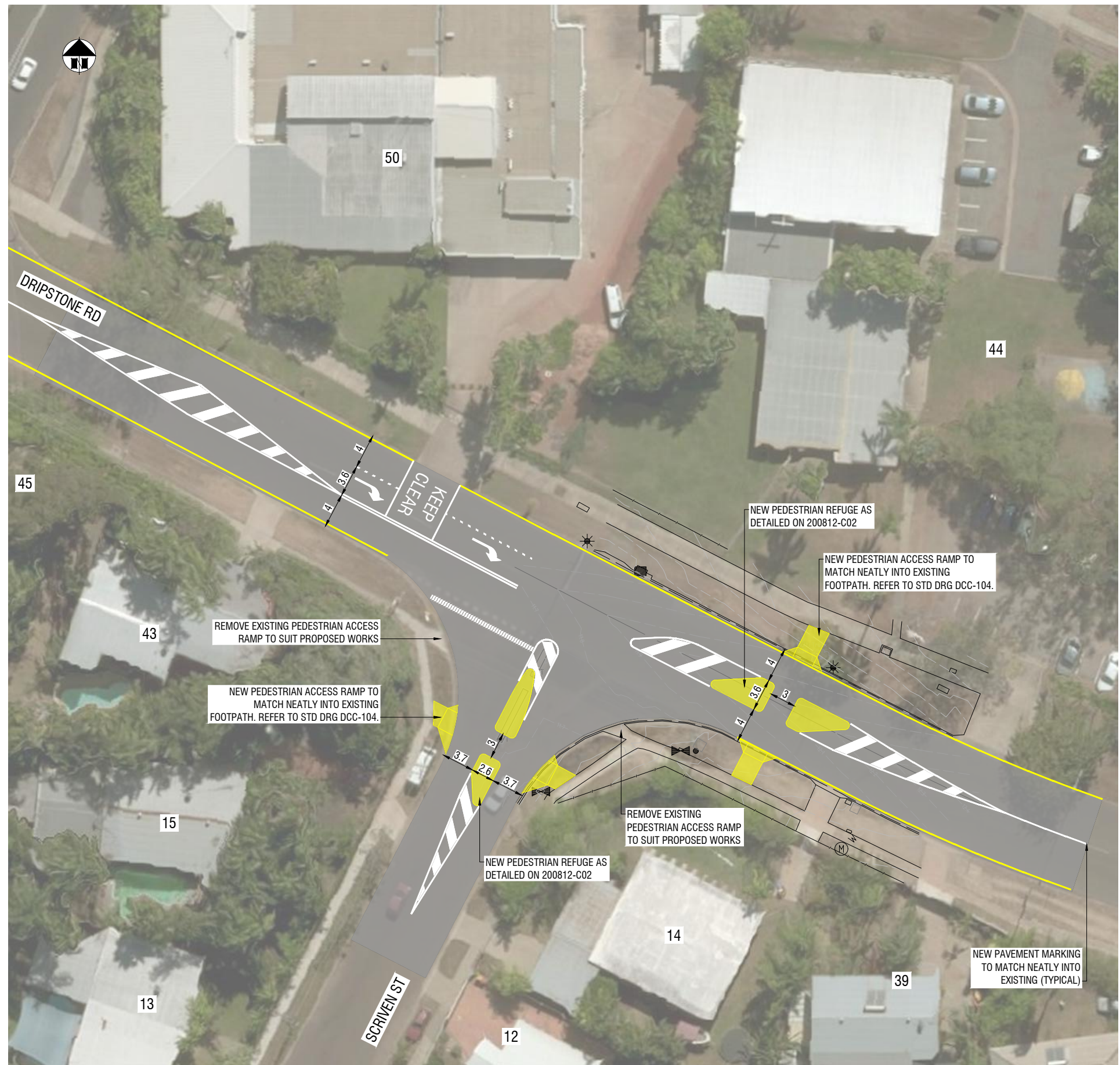
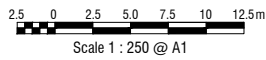


SITE 5 - STYLES ST - PETT ST INTERSECTION
SCALE: 1:250 @ A1



SITE 6 - DRIPSTONE RD - SCRIVEN ST INTERSECTION
SCALE: 1:250 @ A1



AMENDMENTS

No.	DESCRIPTION	DATE	INITIAL
C	ISSUED FOR 90% REVIEW UPDATED TO SUIT CoD COMMENTS ISSUED FOR DISCUSSION	19.01.2021	R.T.
B		17.11.2020	R.T.
A		28.10.2020	R.T.

WARNING

ALL REASONABLE CARE HAS BEEN TAKEN TO ACCURATELY SHOW THE POSITION OF EXISTING SERVICES. HOWEVER, THE POSITION OF SUCH SERVICES SHOULD BE PROVEN ON SITE AND NO GUARANTEE CAN BE GIVEN THAT ALL EXISTING SERVICES ARE SHOWN.

Suite 7/9, Keith Lane, Fannie Bay
Northern Territory 0820
Telephone 08 8941 1678
Email rfp@rpfeng.com



DRAWN	C.TAN
DESIGNED	R.TREACY
SCALE	AS SHOWN
CHECKED	R.TREACY
APPROVED	
DATE	
SHEET	6 OF -

ALAWA TRAFFIC CALMING WORKS

SITE 5 - STYLES ST - PETT ST INTERSECTION
SITE 6 - DRIPSTONE RD - SCRIVEN ST INTERSECTION

DRAWING No. 200812-C06

SHEET SIZE A1

AMEND. C

