


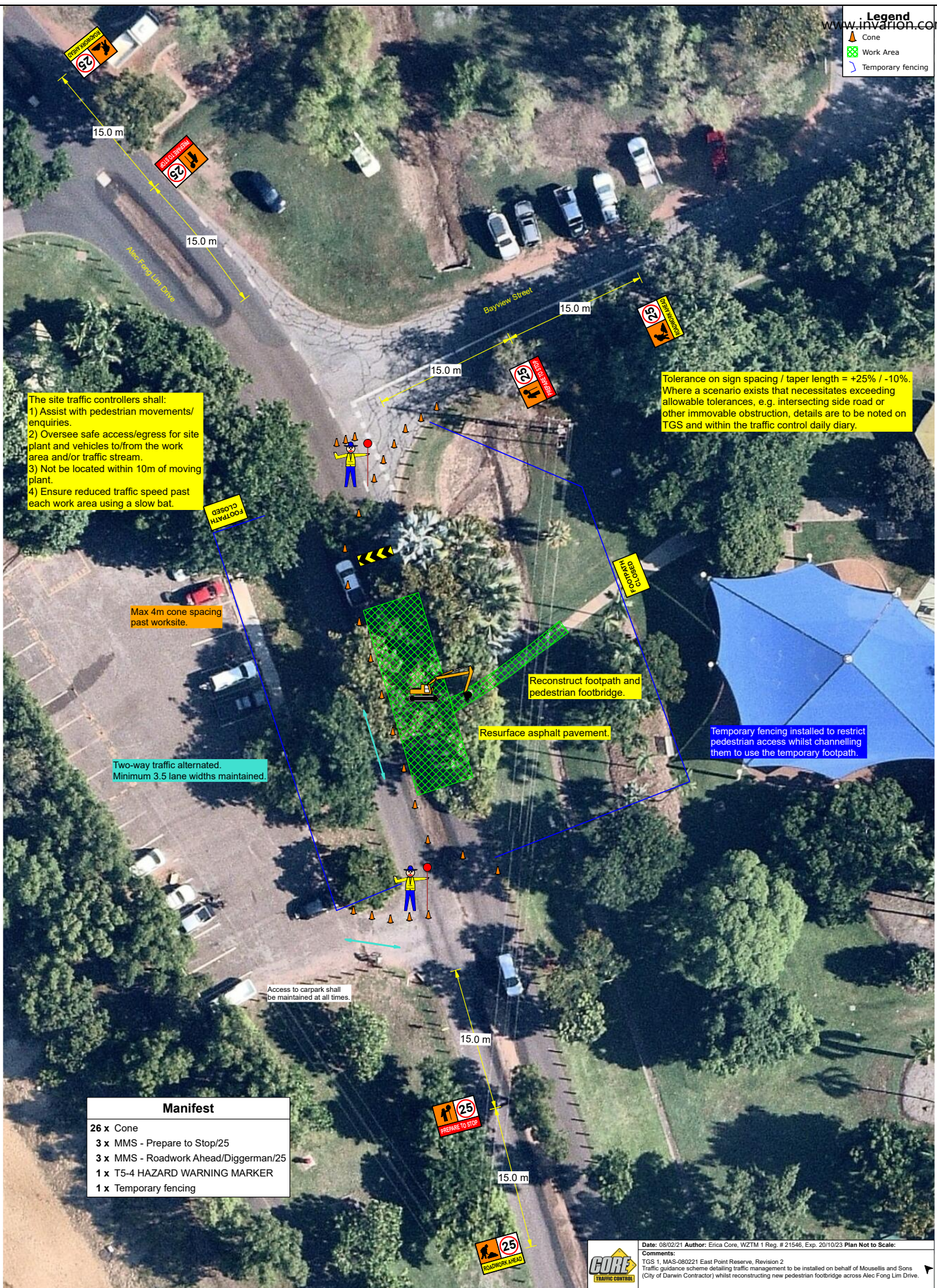


Legend

-  Cone
-  Work Area
-  Temporary fencing



The site traffic controllers shall:

- 1) Assist with pedestrian movements/enquiries.
- 2) Oversee safe access/egress for site plant and vehicles to/from the work area and/or traffic stream.
- 3) Not be located within 10m of moving plant.
- 4) Ensure reduced traffic speed past each work area using a slow bat.

Tolerance on sign spacing / taper length = +25% / -10%.
Where a scenario exists that necessitates exceeding allowable tolerances, e.g. intersecting side road or other immovable obstruction, details are to be noted on TGS and within the traffic control daily diary.

Max 4m cone spacing past worksite.

Two-way traffic alternated.
Minimum 3.5 lane widths maintained.

Access to carpark shall be maintained at all times.

Reconstruct footpath and pedestrian footbridge.

Resurface asphalt pavement.

Temporary fencing installed to restrict pedestrian access whilst channelling them to use the temporary footpath.

FOOTPATH CLOSED

FOOTPATH CLOSED

Manifest	
26 x	Cone
3 x	MMS - Prepare to Stop/25
3 x	MMS - Roadwork Ahead/Diggerman/25
1 x	T5-4 HAZARD WARNING MARKER
1 x	Temporary fencing