

## 1 PURPOSE

The purpose of this policy is to establish a framework for Council's relationships with international governments of cities, regions and districts in other nations.

## 2 SCOPE

This policy applies to all international relations activities and programs offered by the City of Darwin, Elected Members and Council staff.

## 3 POLICY STATEMENT

City of Darwin is committed to ensuring its international relations provide social, cultural, environmental and economic benefits and facilitate cultural exchanges that deliver on mutual interests. This Policy promotes a planned, whole of organisation approach to building international relations.

### 3.1 CITY OF DARWIN'S INTERNATIONAL RELATIONS PROGRAM GOALS AND OBJECTIVES INCLUDE:

GOAL	OBJECTIVE
<b>Strategic focus</b>	Support delivery of Darwin 2030: <i>City for People. City of Colour.</i>
<b>Community and cross-Cultural development</b>	Promote and facilitate relationships and opportunities for community development
	Celebrate and develop the relationships, and cultural and economic opportunities for the Larrakia people, as the traditional owners and custodians of the Greater Darwin region.
	Promote Darwin as a multi-cultural community, that acknowledges, respects, and celebrates cultural diversity
	Develop collaborative relationships between cultural and recreational groups and organisations
	Support and resources community-driven initiatives where appropriate



GOAL	OBJECTIVE
<b>Economic development</b>	Support City of Darwin's economic development priorities and Smart City program
	Support international cooperation in education and research opportunities
	Increase international direct investment opportunities and trade businesses to Darwin municipality
	Create mutual economic benefit for both cities/districts
	Provide a conduit between local industries and international industries
	Accelerate economic growth through commercial partnerships
	Leverage existing industry strengths into increased innovation and job creation
	Grow the City's regional economy
	Foster linkages by providing local businesses with access to new markets and networks.
<b>International promotion of the City of Darwin</b>	Raise the profile of Darwin internationally as an attractive city and a great place to live, work, invest, visit, do business, and study.
	Increase the number and scale of international events held in Darwin municipality.

### 3.2 THE FOLLOWING BENEFITS SHOULD APPLY TO INTERNATIONAL RELATIONSHIPS:

*Community and culture* – people that visit and settle in Darwin support the City of Darwin's vision for a creative, connected and inclusive city.

*Economy* – access to markets, commercial opportunities, international investment in Darwin and international students and tourists all contribute to the city's economic prosperity.

### 3.3 INTERNATIONAL RELATIONSHIPS MAY BE FORMAL OR INFORMAL AND MAY INCLUDE:

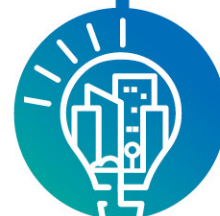
- Strategic Partnerships, or
- Sister City Relationships

Before a Sister City relationship can commence, a city must have had a strategic partnership arrangement in place for a minimum period of two (2) years. Council resolution is required for any exemptional case.

- International Relations Advisory Committee

City of Darwin International Relations framework is supported by the International Relations Advisory Committee, which is advisory in nature. The Committee operates to advocate, inform, and support Council with its International Relations strategy, while supporting a whole of Council approach to community, cultural and economic development.

International Relations and Sister City Policy 0053.100.E.R	Page 2 of 4
Version 2	Decision Number: ORD378/22
Responsible Officer: GM Innovation Hub	Adoption Date: 26/07/2022
	Next Review Date: 26/07/2026



### 3.4 STRATEGIC PARTNERSHIP

A Strategic Partnership is a formal relationship between cities and/or nations, which are established outside of a Sister City relationship.

A strategic partnership will focus on specific benefits of mutual interest to be achieved and involves strong synergies between business and governments. Examples include education, research, economic development, tourism or a specific trade sector.

Multiple Strategic Partnerships may be developed with another nation, focusing on different synergies and benefits with different cities. There will typically be more community stakeholders and businesses involvement in this type of relationship, with business, institutions and community stakeholders funding their own level of engagement, facilitated by the city.

Strategic Partnerships include:

- Friendship Agreements
- Partnership Agreements
- Memorandum of Cooperation Agreements
- Memorandums of Understanding
- Letters of Intent
- Strategic Partnership Agreements.

City of Darwin's four Friendship cities include:

- Honolulu (US)
- Qingdao (China)
- Santa Cruz (Ecuador)
- Guangzhou (China).

### 3.5 SISTER CITY RELATIONSHIP

A Sister City Relationship is a formal relationship between city governments and focuses on social and cultural exchanges and economic benefits between city governments on behalf of, and involving, communities and businesses.

Sister City Relationships may focus on all aspects of a city – governance and administration, the economy, culture and communities, and the environment.

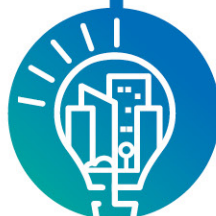
Sister City Relationships are much broader in scope than a Strategic Partnership, with emphasis on developing and nurturing long-term social, cultural, and economic relationships.

#### Sister City Advisory Committee

City of Darwin's current Sister City relationships are historical and are founded on the global Sister Cities movement.

The Sister Cities are supported by a Sister City Advisory Committee, which is advisory in nature. Through educational, cultural, professional, economic and humanitarian exchange, it

International Relations and Sister City Policy 0053.100.E.R		Page 3 of 4
Version 2	Decision Number: ORD378/22	Adoption Date: 26/07/2022
Responsible Officer: GM Innovation Hub		Next Review Date: 26/07/2026



aims to enhance cross-cultural understanding and build vibrant and connected communities and generating mutual benefits for both cities.

Seven of Council's Sister City Relationships are supported by a Sister City Advisory Committee on a volunteer basis.

City of Darwin's seven Sister Cities include:

- Anchorage (US)
- Ambon (Indonesia)
- Dili (Timor-Leste)
- Haikou (China)
- Kalymnos (Greece)
- Milikapiti (Northern Territory, Australia)
- Denpasar (Indonesia).

### 3.6 DISSOLVING STRATEGIC PARTNERSHIPS OR SISTER CITY RELATIONSHIPS

Both Sister City Relationships and Strategic Partnerships may be dissolved upon mutual agreement of the two cities or if City of Darwin determines upon review that the relationship has ceased to meet stated goals and objectives. A formal notice of Council's decision will be sent to the relevant city or region.

### 3.7 SISTER CITY PROGRAM

Sister City Relationships aim to deliver the Sister City Program and to support the objectives of the International Relations and Sister City Policy 0053.100.E.R.

## 4 BUDGET AND RESOURCE COMMITMENT

Funding and resourcing for the International Relations Program will be established annually as part of the budget and Municipal Plan process.

## 5 DEFINITIONS

**Council staff** means all employees and workers, contractors, volunteers and all others who perform work on behalf of Council.

**Elected Members** means the Lord Mayor and Councillors as appointed in accordance with the *Local Government Act 2019*.

## 6 LEGISLATIVE REFERENCES

*Local Government Act 2019* (NT)

## 7 PROCEDURES / RELATED DOCUMENTS

2030 Economic Development Strategy  
Municipal and Strategic Plans

## 8 RESPONSIBILITY / APPLICATION

The General Manager Innovation is responsible for managing the implementation of this policy.

International Relations and Sister City Policy 0053.100.E.R		Page 4 of 4
Version 2	Decision Number: ORD378/22	Adoption Date: 26/07/2022
Responsible Officer: GM Innovation Hub		Next Review Date: 26/07/2026

