

**DON'T LET OUR
EFFORTS GO
TO WASTE**



MULTI DWELLING BIN COLLECTION DAYS

TWICE WEEKLY WASTE COLLECTION **RED LID BIN**

MONDAY & THURSDAY	TUESDAY & FRIDAY	
Bayview	Alawa	Muirhead
Cullen Bay	Brinkin	Nakara
Darwin	Coconut Grove	Nightcliff
Fannie Bay	Jingili	Northlakes
Larrakeyah	Karama	Rapid Creek
Ludmilla	Leanyer	Tiwi
Parap	Lyons	Wagaman
Stuart Park	Malak	Wanguri
The Gardens	Marrara	Wulagi
The Narrows	Millner	
Tipperary Waters	Moil	
Winnellie		
Woolner		

WHAT ARE MULTI DWELLINGS.

Multi dwellings (aka MUDs) include units, flats and townhouses. The bins are collected manually (not by automated trucks) from the bin compound.



Your red lid bin (general waste) is collected twice weekly. Check your suburb's collection days.



WEEKLY RECYCLING COLLECTION **YELLOW LID BIN**

MONDAY	TUESDAY	WEDNESDAY		
Cullen Bay Darwin Larrakeyah The Gardens The Narrows Tipperary Waters	Coconut Grove Fannie Bay Ludmilla Parap Winnellie	Alawa Bayview Brinkin Jingili Karama Leanyer Lyons Malak	Marrara Millner Moil Muirhead Nakara Nightcliff Northlakes Rapid Creek	Stuart Park Tiwi Wagaman Wanguri Woolner Wulagi

THURSDAY
Parap Fannie Bay



Your yellow lid bin (recycling) is collected weekly. Check your suburb's collection day.

A few simple mistakes, like putting plastic bags in the yellow recycle bin, can send tons of good recycling to landfill. So recycle your thinking and learn to recycle for good.



Keep it loose



Don't bag your recycling



IT'S TIME TO RECYCLE RIGHT

IN MULTI-DWELLINGS A SIGNIFICANT AMOUNT OF RUBBISH IS ENDING UP IN THE RECYCLING BINS.



USE THE RIGHT BIN



PLEASE KEEP PLASTIC BAGS, FOOD SCRAPS, CERAMICS, CLOTHING AND GARDEN WASTE OUT OF YOUR RECYCLING BIN

Are there enough bins at your building so that residents can find space in the right bin? If not, please let your body corporate or agent know.



DON'T LET OUR EFFORTS GO TO WASTE.



IF IN DOUBT, LEAVE IT OUT!

Or put it in your red lid bin





HOW TO MAKE SURE YOUR WHEELIE BINS GET EMPTIED:

- Bin compound is to be accessible and clean
- All material must be placed in the bins
- Only recyclable items go in the yellow bin
- No overflowing bins
- Close the bin lid
- Bin must not exceed **70kg**
- Council bins only



How to report a lost or stolen or damaged wheelie bin. Phone JJ Richards on **1800 290 581** or report through City of Darwin's Website.



How to avoid flies. Our website has tips on what you can do darwin.nt.gov.au



Avoid - Avoid producing waste in the first place. For example, before buying something ask yourself 'Do I really need it.'

Reduce - Reduce the amount of waste created. For example, choose products with less packaging.

Re-use - Use things more than once or donate to an op-shop. For example, use clean ice-cream tubs to store loose items.

Recycle - The items placed in your recycling bins are turned back into raw materials to make new products.

Recover - Industry can generate energy from waste. For example, at Shoal Bay Renewable Energy Facility a gas extraction system turns waste into energy.

Dispose - As a last resort, dispose of waste in landfill.

THE WASTE HIERARCHY

- The waste hierarchy is a universally accepted guide on how to prioritise how we use, reuse and dispose of material for the best environmental outcome for now and the future
- The higher up the hierarchy you act, the better for the environment



**RECYCLE
FOR GOOD**

WHAT HAPPENS TO MY RECYCLABLES?

PURCHASING

Choose items made from recycled materials when you shop.



COLLECTION

Recyclable items are collected from your yellow-lid bin.



RECYCLING

The sorted items get processed and recycled into new materials and items.



SORTING

At the recycling facility materials are sorted and bundled together.



MANUFACTURING FACILITY



RECYCLING FACILITY



RECYCLING INFORMATION

The Australasian Recycling Label makes it easy to put your packaging in the right bin



Recyclable: The coloured/opaque recycling symbol, means that this piece of packaging can be placed in the recycling bin as it is. Each piece of packaging with this label has to be placed separately in the recycling bin.



Conditionally Recyclable: The clear/ transparent recycling symbol means that you must follow the instructions to recycle this packaging component. If you don't follow the instructions it has to go in the rubbish bin, as it will otherwise not be recycled and cause contamination to the recycling stream.



Not Recyclable: The bin symbol, means that this piece of packaging is not recyclable and you must place it in the rubbish bin. DO NOT place it in the recycling bin. It will not get recycled and it will contaminate the recycling stream.

HOW CAN YOU RECYCLE BETTER

- Use the right bin
- Containers and packaging should not contain food or liquids
- Put items into the bin loose - not in plastic bags



DON'T PUT THESE ITEMS IN THE RECYCLING BIN



- ✗ ceramics
- ✗ clothing
- ✗ disposable nappies
- ✗ e-waste
- ✗ food scraps
- ✗ garden hoses
- ✗ garden waste
(take this to Shoal Bay
for mulch)
- ✗ glass and mirrors
- ✗ lightbulbs
- ✗ plastic bags
- ✗ pots and pans
- ✗ scrap metal

DID YOU KNOW...

You can drop off:

- household batteries
- print cartridges
- mobile phones

at the Civic Centre, Nightcliff Community Centre, Casuarina Library and the Recycle Shop at Shoal Bay Waste Management Facility.



Remember - worm farms and compost are a great way to recycle your organic waste.

Ewaste

Ewaste items can be dropped off at the Recycle Shop, Resources Recovery Area and The Transfer Station at Shoal Bay Waste Management Facility.

Soft plastics

Plastic bags and other Soft plastics can be deposited into the REDcycle bins. These are found in most Coles and Woolworths stores

If soft plastics easily scrunch up in your hand then **DON'T** put them in the recycling bin

Check our website for more information
darwin.nt.gov.au

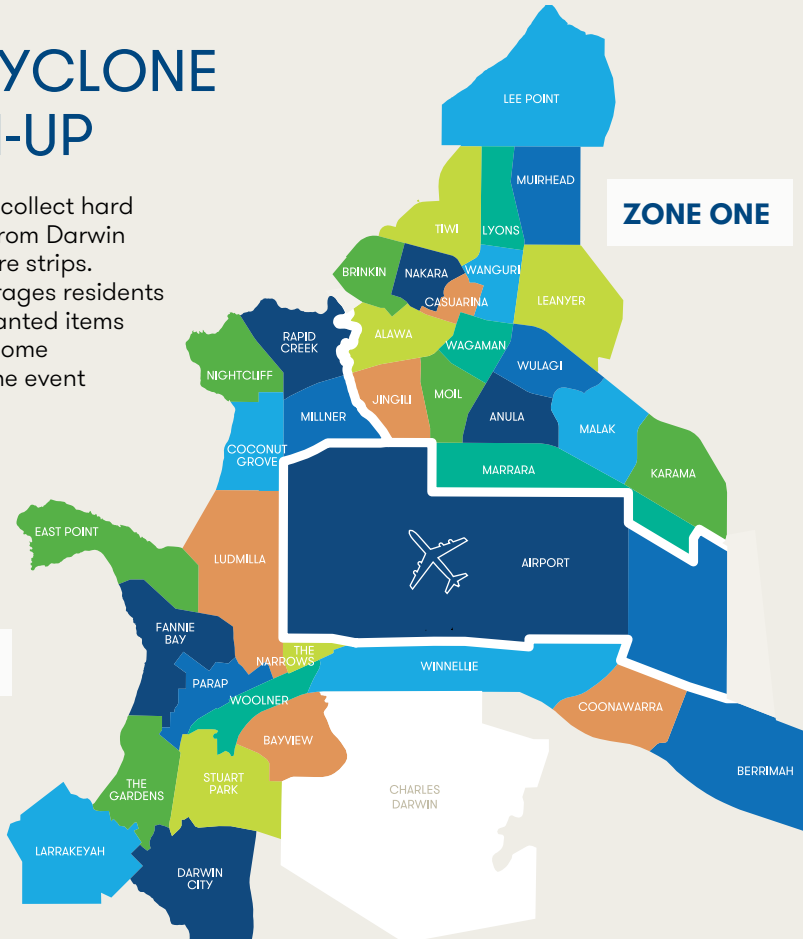


**RECYCLE
FOR GOOD**

PRE-CYCLONE CLEAN-UP

City of Darwin collect hard rubbish items from Darwin residents' nature strips. Council encourages residents to put out unwanted items which may become hazardous in the event of a cyclone.

ZONE TWO



ZONE ONE

WHAT YOU NEED TO KNOW

- The pre-cyclone cleanup collection takes place from September to October each year. Zone one is collected first shortly followed by zone 2. Check our website for your exact suburb collection dates.
- Place your items on the nature strip
- Group similar items together and leave a space between groups of items (this will maximise the reuse and recycling of your items)
- Keep footpaths clear and be mindful of the safety of Council workers
- Seniors and residents with a disability can call Council for assistance on 8930 0300

HOW TO SET OUT YOUR WASTE

Please separate your items into groups on the nature strip as outlined.
Up to two cubic meters of waste allowed. Equivalent to two 6x4 trailer loads.



WHAT WILL BE COLLECTED?

YES

- ✓ whitegoods
- ✓ air conditioners
- ✓ furniture/flooring
- ✓ bicycles
- ✓ toys
- ✓ computers and TVs
- ✓ scrap metal



NO

- ✗ asbestos
- ✗ flammable liquids/gas bottles
- ✗ paint/oil/chemicals
- ✗ batteries
- ✗ car parts/bodies/tyres
- ✗ commercial waste
- ✗ concrete
- ✗ garden refuse



PLEASE REMEMBER

Please remove doors from fridges
for public safety



**RECYCLE
FOR GOOD**

SHOAL BAY WASTE MANAGEMENT FACILITY

WHO CAN USE THIS FACILITY?

This service is for residents of Darwin.

- You need your access tag, domestic waste only
- Vehicles less than one tonne load capacity
- House renovations must go through the commercial lane

Open every day 7am-6pm
(Christmas Day - Check Council website for opening hours)

Don't forget your access tag.



Here's how to sort your load before you head to Shoal Bay to optimise what can be reused and recycled.

1ST STOP THE RECYCLE SHOP

Reuseable furniture, bric-a-brac, books, toys, crockery, garden pots, sporting gear, TVs computers, e-waste and whitegoods.

2ND STOP SHOAL BAY MULCH

Palm fronds, shrubs, small tree prunings, lawn clippings, tree stumps (up to 1.5m length and 800mm diameter).

Mulch is available to purchase.

3RD STOP THE TRANSFER STATION

There are drop-off areas for the following items.

Scrap metal, cardboard, fluoro lights, and hazardous items (listed below).

Anything left over can go in the large skip bins.

SORT YOUR LOAD

Pack your vehicle or trailer so you can easily drop off recyclables first, then green waste followed by general waste.



RECYCLABLES



GREEN WASTE



GENERAL WASTE

1. RECYCLABLES

2. GREEN WASTE

3. GENERAL WASTE



TAKE HOUSEHOLD HAZARDOUS WASTE TO SHOAL BAY TRANSFER STATION

The safest way to dispose of these is at the Shoal Bay Transfer Station:

- gas bottles (max 2 x 9.5kg)
- car batteries
- paint (max 10 litres)
- oils (max 10 litres) and oil filters
- chemicals (all liquids up to 10 litres)

Please contact Council for advice.



**RECYCLE
FOR GOOD**

WASTE AND RECYCLING EDUCATION CENTRE



WASTE AND RECYCLING EDUCATION CENTRE

Council's education officer conducts school tours of the Shoal Bay Waste Management Facility.

The tours are fun, educational and are focused on teaching groups how to Reduce, Reuse, Recover, to minimise the waste going to landfill.

For tour bookings contact the Waste Management Team **8930 0300**.

USEFUL CONTACTS

City of Darwin **8930 0300**

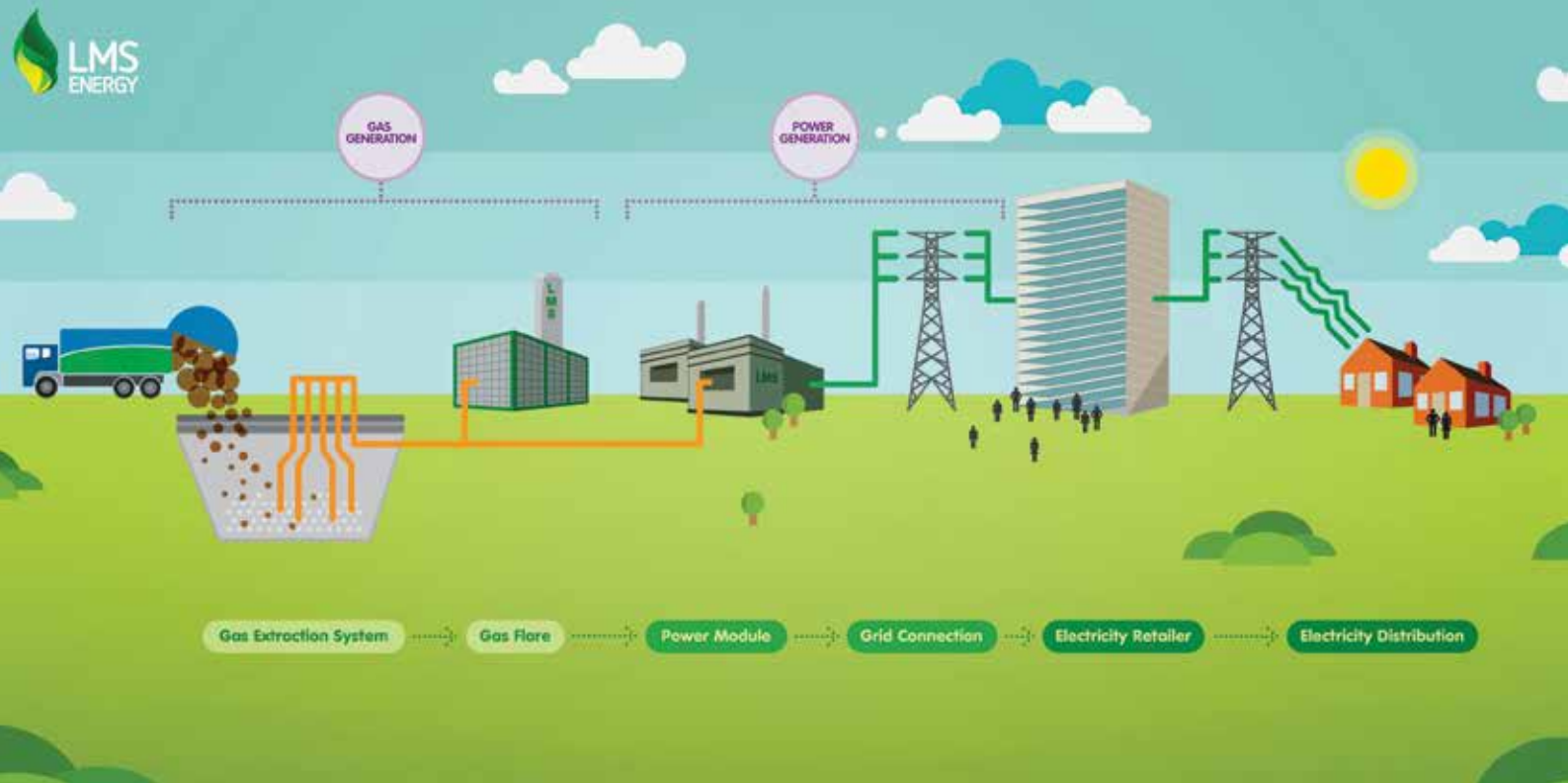
Shoal Bay Weighbridge **8930 0471**

Shoal Bay Mulch **0429 803 919**

Shoal Bay Recycle Shop **0417 816 066**

JJ Richards (Waste Contractor)

1800 290 581



SHOAL BAY RENEWABLE ENERGY FACILITY

This facility is owned and operated by Landfill Management Services (LMS) in cooperation with City of Darwin.

Opening in 2005, this facility generates 9,000 megawatt hours of renewable electricity per year which is enough to power 1,800 homes. This is a reduction of approximately 38,000 tons of greenhouse gas emissions (CO₂) a year.

The mitigation of greenhouse emissions is an important step in ensuring the disposal of Darwin's waste has the lowest possible impact on the environment.



**RECYCLE
FOR GOOD**



darwin.nt.gov.au