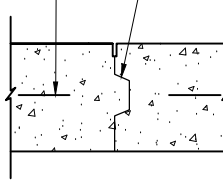


SLAB THICKNESS AND REINFORCING

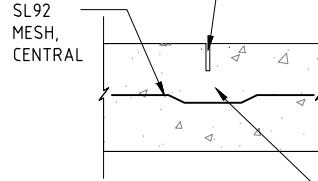
LAND USE ZONE	THICKNESS	REINFORCING
RESIDENTIAL	100mm	SL72
NON-RESIDENTIAL	150mm	SL92

REINFORCING MESH CENTRALLY PLACED. MESH IS TO BE STOPPED 50mm FROM THE JOINT



KEYED EXPANSION JOINT (KEJ)
NOT TO SCALE

SAW CUT 30mm DEEP. MESH CUT AT EVERY SECOND BAR.

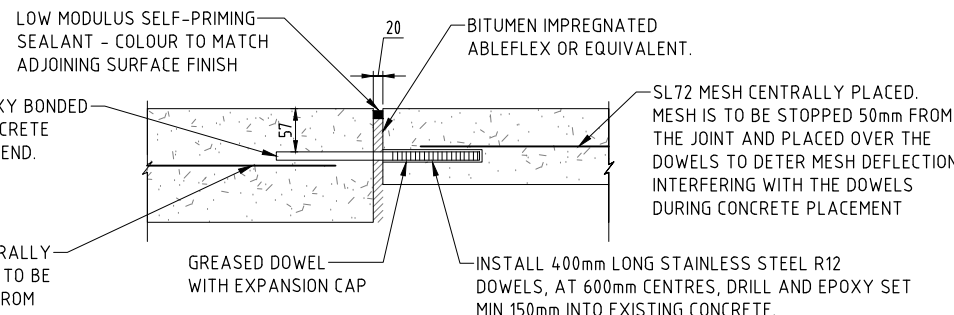
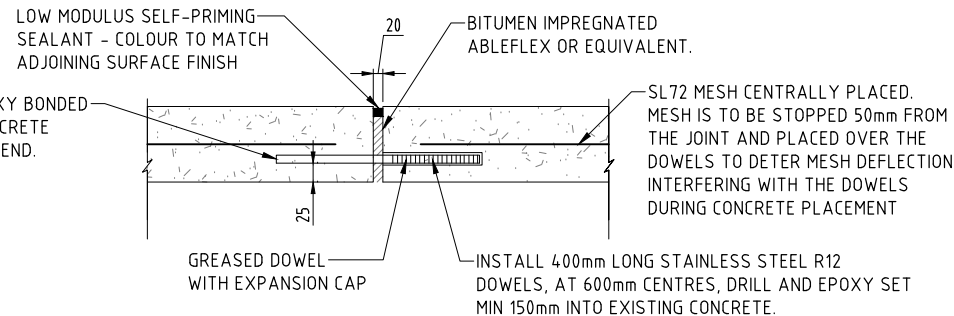
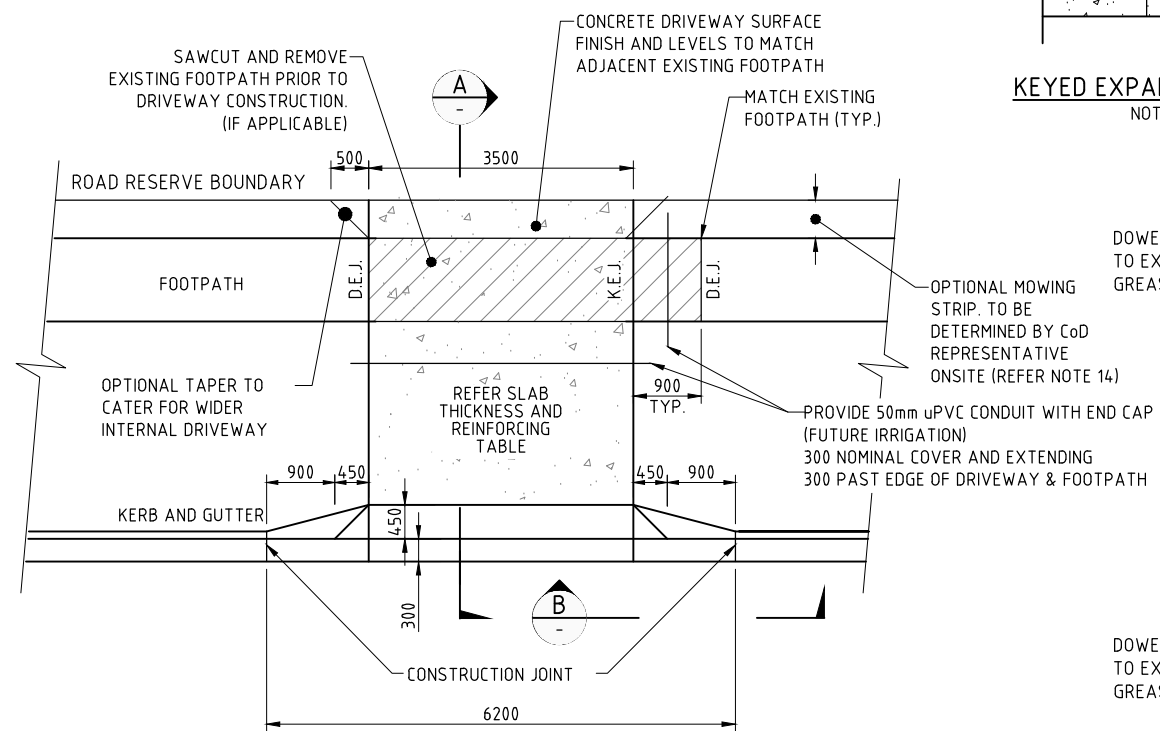


CONTRACTION JOINT (CJ)
NOT TO SCALE

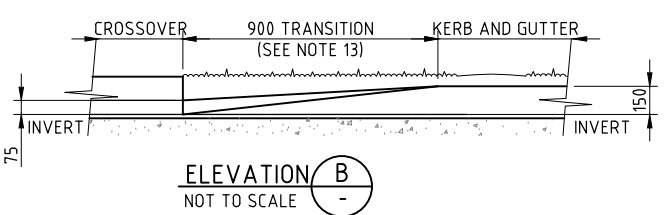
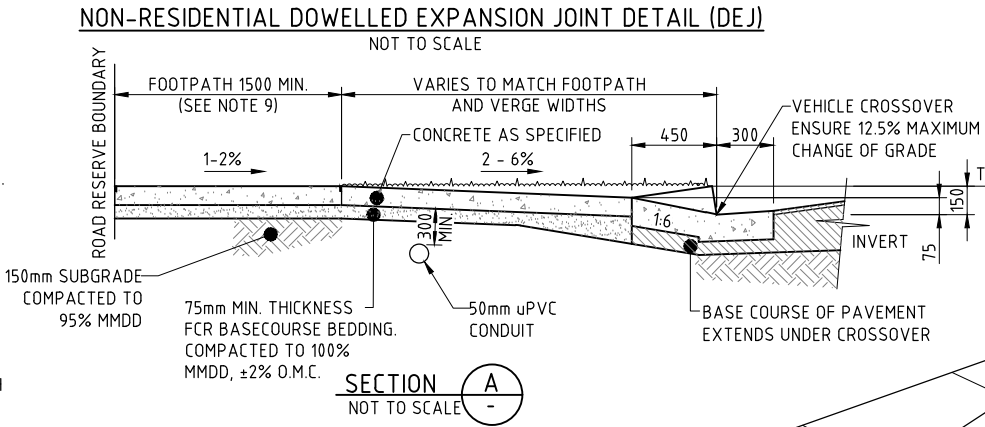
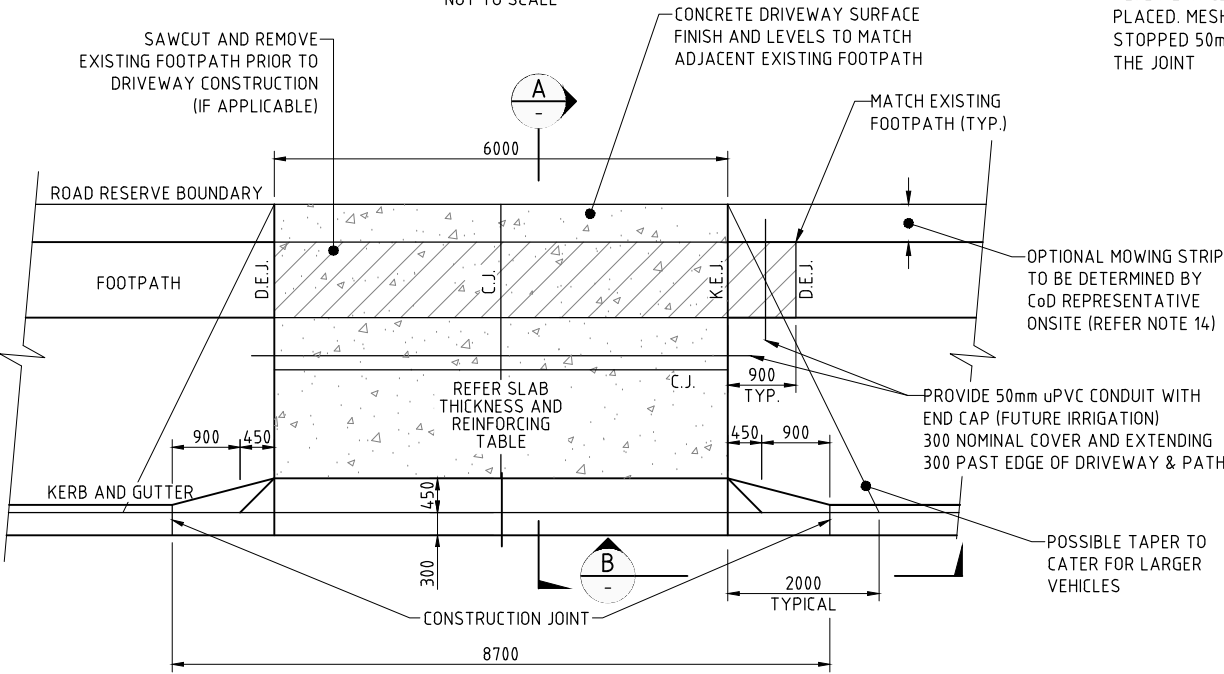
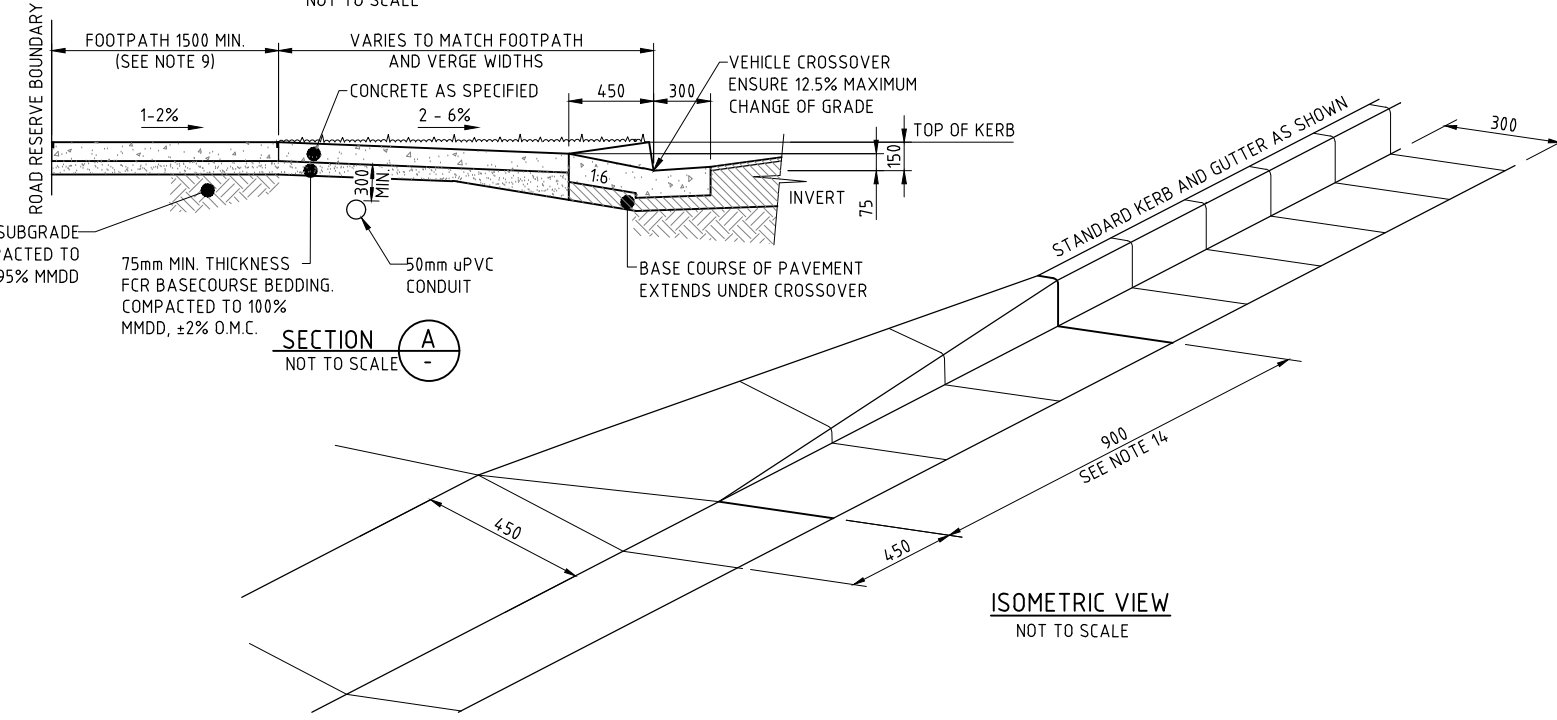
DEPRESS MESH UNDER CJ TO MAINTAIN COVER. CUT EVERY SECOND BAR TO INDUCE CRACK

GENERAL NOTES

- ALL WORK MUST COMPLY WITH THE STANDARD SPECIFICATION FOR SUBDIVISIONS ALONG WITH PROJECT SPECIFIC AMENDMENTS.
- CONCRETE TO BE N25/20/80. CONCRETE TO BE MOIST CURED FOR AT LEAST 48 HOURS AFTER CONCRETE POUR.
- EXPOSURE CLASSIFICATION AND MINIMUM COVER TO REINFORCEMENT MUST COMPLY WITH AS3600.
- MOISTEN BASECOURSE PRIOR TO CASTING CONCRETE.
- CONSTRUCTION JOINTS ARE REQUIRED FOR PLANNED INTERRUPTIONS. ROUGHEN AND CLEAN FACE OF HARD CONCRETE, REMOVE FOREIGN MATERIAL.
- THE CONCRETE PATH MUST BE STEEL TROWELLED FOLLOWED BY A MOIST HAIR BRUSH. THE FINAL SURFACE MUST BE NON-SLIP WITH A MINIMUM TEXTURED SURFACE OF 2mm.
- CONCRETE WORKS MUST COMPLY WITH AS3600 AND AS1379.
- MATCH NEW DRIVEWAYS TO EXISTING FOOTPATH AND VICE-VERSA. REFER SS1009 FOR FOOTPATH DETAILS.
- THE TOTAL WIDTH OF THE FOOTPATH THAT TRAVERSES A VEHICULAR CROSSING SHALL HAVE A CROSSFALL OF 1% - 2% TOWARDS THE ROADWAY.
- LIAISE WITH APPROPRIATE AUTHORITY FOR ADJUSTMENT OF EXISTING STRUCTURES WHERE NECESSARY. PITS MUST NOT BE LOCATED WITHIN DRIVEWAYS.
- THE DRIVEWAY MUST MEET SIGHT DISTANCE CRITERIA FOR BOTH ENTRY AND EXIT IN ACCORDANCE WITH AS2890.1.
- DRIVEWAYS MUST BE A MINIMUM OF 6m FROM THE TANGENT POINTS OF ANY INTERSECTING ROADWAY.
- TRANSITION NOT REQUIRED WHERE DRIVEWAY INSTALLED AGAINST LAYBACK KERB.
- WHERE POSSIBLE, FOOTPATH IS TO BE CONSTRUCTED AGAINST PROPERTY BOUNDARY. WHERE THIS IS NOT POSSIBLE A 500MM MOWING STRIP IS TO BE PROVIDED.



NON-RESIDENTIAL DOWELLED EXPANSION JOINT DETAIL (DEJ)



AMENDMENTS			
No.	DESCRIPTION	DATE	INITIAL
E			
D			
C			
B	DETAILS AMENDED	15/10/19	RM
A	ORIGINAL ISSUE	09/03	S.W.S.

STANDARD DRAWING		
DRIVEWAYS		
SHEET 4 OF 19	SHEET SIZE: A1	AMENDT. B
		DRAWING No. DCC-103

