



Feedback
closes
7 July.

Parking on Gardens Road

Events around the Botanic Gardens create pressure on parking along Gardens Road. Current informal parking in this area is causing some issues. City of Darwin is looking to improve the on-street parking and is considering several options.

We want your feedback. Tell us which option you prefer and why.

What are the Issues?

- Current informal (ad hoc) parking creates safety and access issues particularly for people with reduced mobility.
 - some vehicles are parking on shared paths creating issues for path users
 - there is disorderly parking which can reduce the number of parks
 - some vehicles are parking illegally on the yellow line on the Gardens Oval side of the road
- Area attracts large number of visitors for major events creating pressure on existing parking.

What are the parking options? (see images over the page)

OPTION 1: Change yellow line to signage

Remove yellow line on Oval side and replace it with 'No Parking' signs. For major events these signs could be covered allowing informal parking when needed.

OPTION 2: Formalise bays - one side

Formalise parking by creating parking bays (approx 30 bays) on the Botanic Gardens side near Gilruth Avenue. (Parking in bays would be free of charge.)

Remove yellow line on Oval side and replace it with 'No Parking' signs' For major events these signs could be covered allowing informal parking when needed.

OPTION 3: Formalise bays - both sides

Formalise parking by creating parking bays (approx 90 bays) on both sides of Gardens Road. (Parking in bays would be free of charge.)

OPTION 4: No change

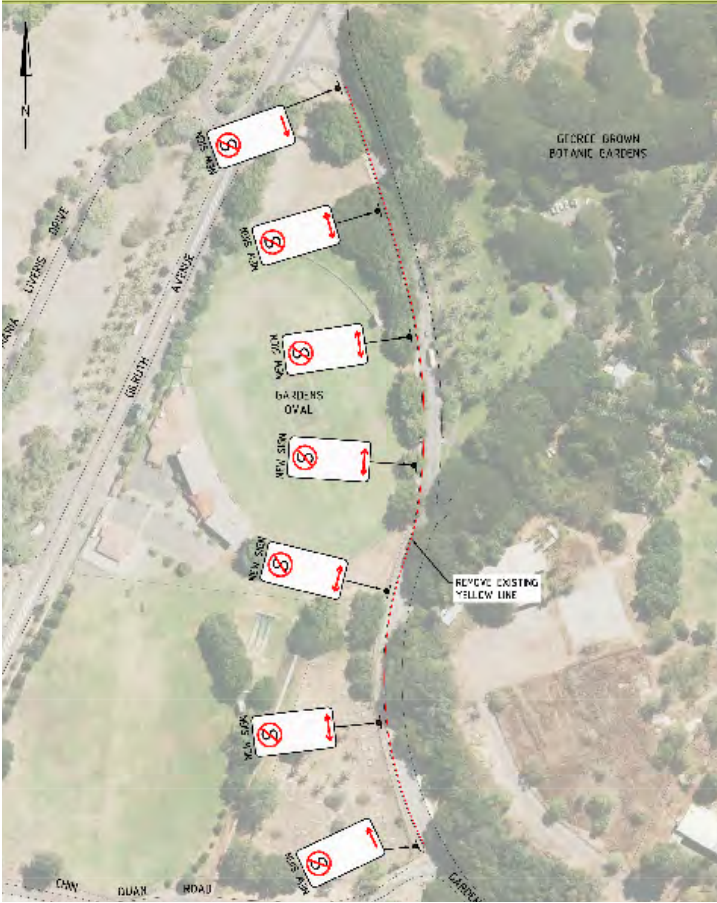
Leave the on-street parking as it is. Yellow line on Oval side and informal parking on Botanic Gardens side.

For more information on these options and to take the survey go to darwin.nt.gov.au/haveyoursay

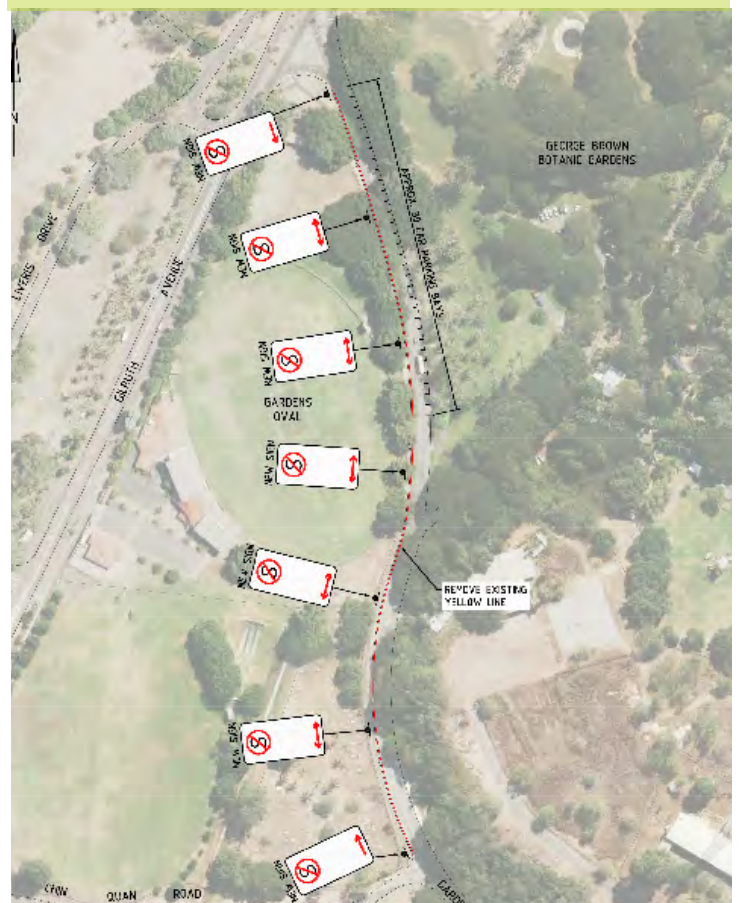
or contact Council's Communication and Engagement Officer on 8930 0194



Option 1 - Change yellow line to signage



Option 2 - Formalise bays on one side



Option 3 - Formalise bays on both sides



Option 4 - No Change

