

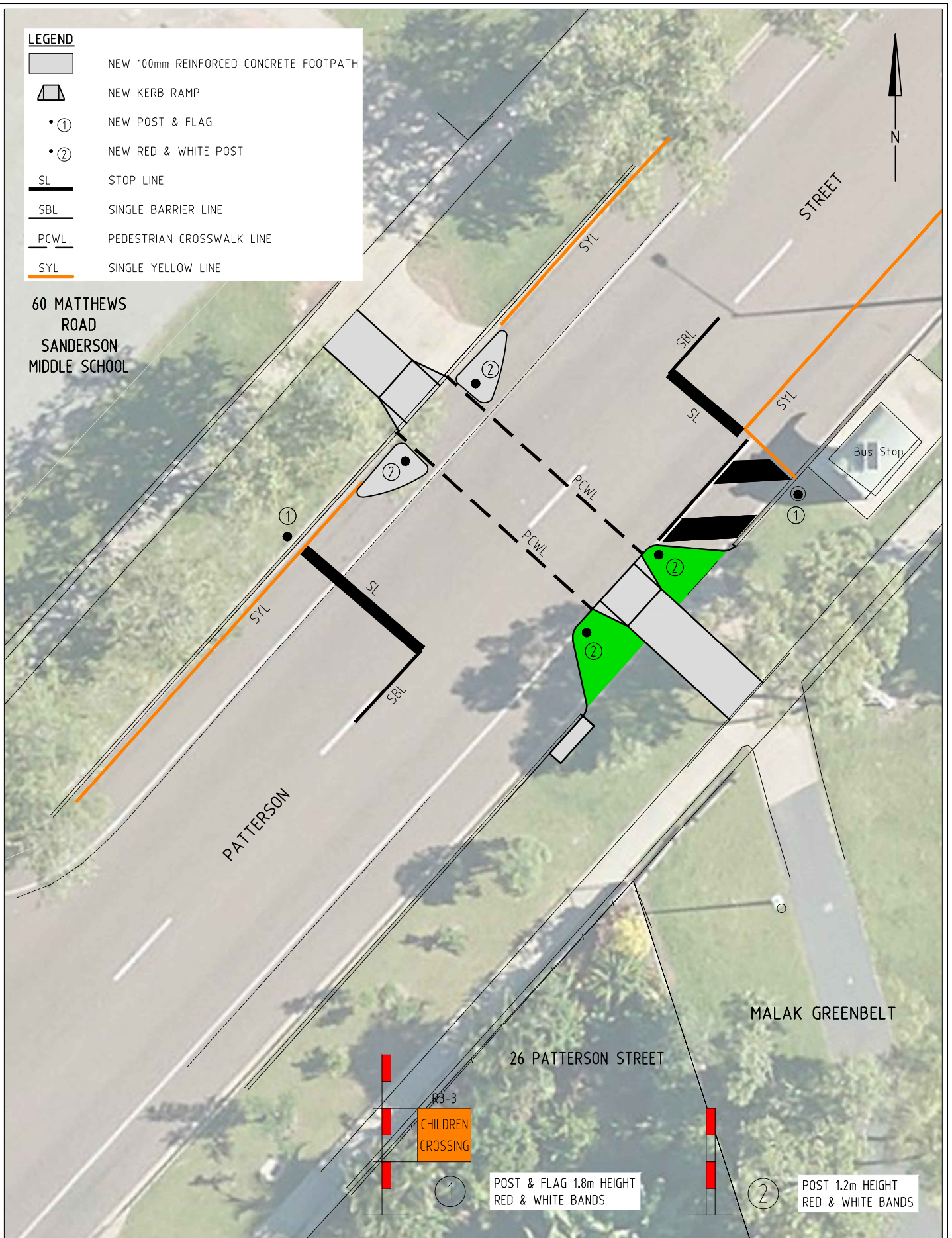


**LEGEND**

-  NEW 100mm REINFORCED CONCRETE FOOTPATH
-  NEW KERB RAMP
- ① NEW POST & FLAG
- ② NEW RED & WHITE POST
- SL STOP LINE
- SBL SINGLE BARRIER LINE
- PCWL PEDESTRIAN CROSSWALK LINE
- SYL SINGLE YELLOW LINE

60 MATTHEWS ROAD  
SANDERSON MIDDLE SCHOOL



R3-3  
CHILDREN CROSSING

POST & FLAG 1.8m HEIGHT  
RED & WHITE BANDS

POST 1.2m HEIGHT  
RED & WHITE BANDS

DRAWN HC	DESIGNED HC
SCALE NTS	CHECKED
APPROVED	DATE NOV '20
	SHEET 4 OF 4

SANDERSON MIDDLE SCHOOL  
PROPOSED SCHOOL CROSSING  
SITE 3 - PRELIM. CONSTRUCTION PLAN

SHEET SIZE: A4 DRAWING No. 04/11/14/04-A4 AMENDT. A

