

DO YOU REQUIRE ASSISTANCE?

Assisted pick-ups will be collected from

2-13 October 2023

Seniors and residents with mobility limitations can request assistance to remove items from their property.

Residents are to list items for removal at the time of booking.

This is a free service and bookings are essential

Call 08 8930 0431
so we can assist you



We're committed to creating a clean and environmentally friendly Darwin



This paper is made from 100% recycled material

darwin.nt.gov.au/pccu



2023 ANNUAL PRE-CYCLONE CLEAN UP





We're committed to creating a clean and environmentally friendly Darwin.



The PCCU is an opportunity to tidy up around your yard before cyclone season.



PCCU is for household items that are broken, cannot be reused and are too big for red-topped general waste wheelie bins.



This service is free.

WHAT WE WILL AND WON'T PICK UP:



We will pick up

- furniture
- mattresses and other similar items
- e-waste
- white goods
- scrap metals from items like BBQs and bikes.

Please group with like items to assist with recycling, and remove any doors and glass shelves from white goods such as fridges. Limit of 2 cubic metres per household.



We will not pick up

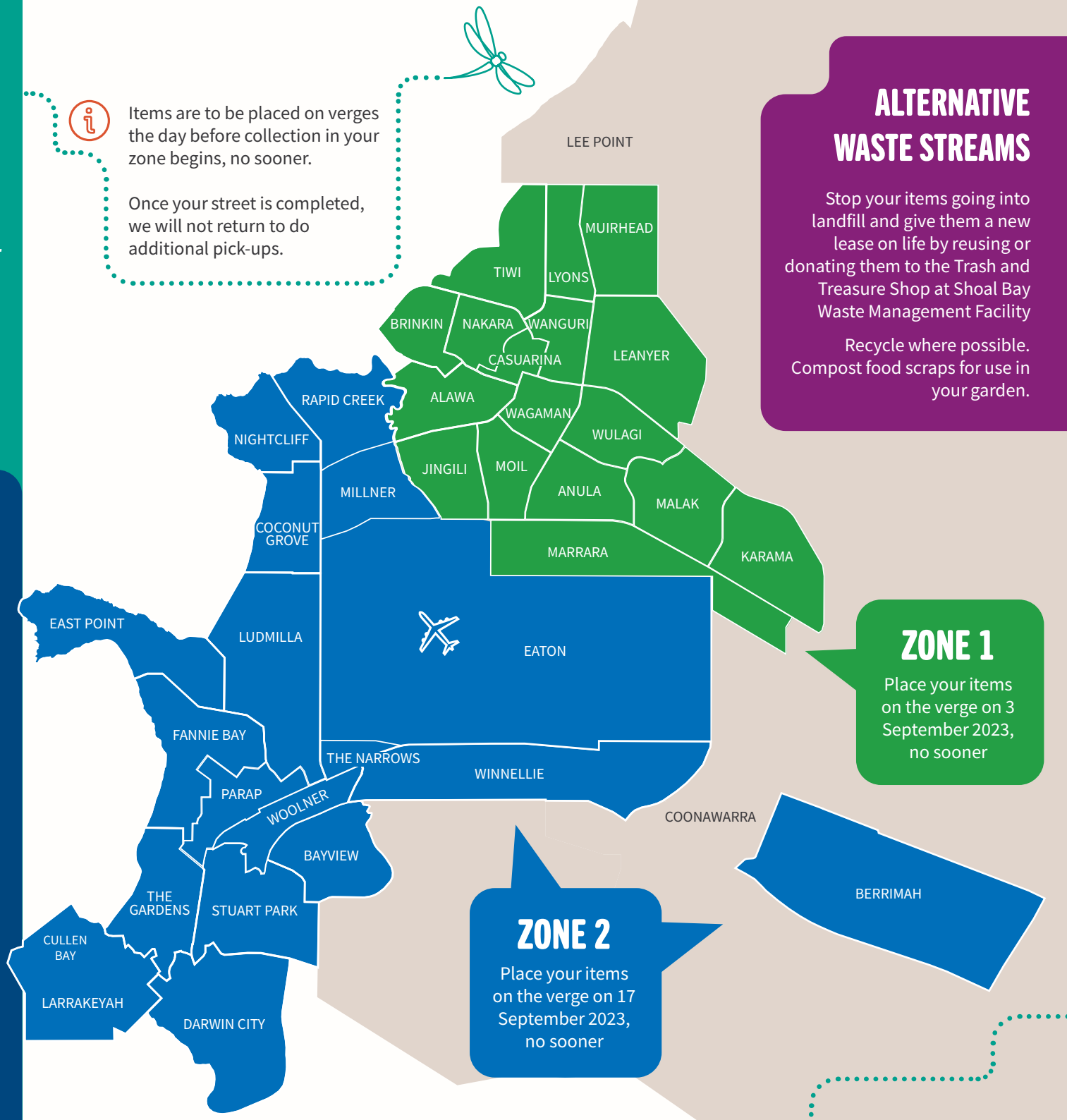
These items are prohibited and can become a hazard to the community. Keep our community safe and only put out what can be picked up.

- liquids
- paints
- asbestos
- concrete
- car parts (including batteries and tyres)
- glass or mirrors
- food waste
- gas bottles
- items longer than 2 m need to be cut down, such as scrap metal, swing sets and lengths of timber
- cardboard is not accepted and should go in yellow-topped wheelie bins for recycling.



Items are to be placed on verges the day before collection in your zone begins, no sooner.

Once your street is completed, we will not return to do additional pick-ups.



ALTERNATIVE WASTE STREAMS

Stop your items going into landfill and give them a new lease on life by reusing or donating them to the Trash and Treasure Shop at Shoal Bay Waste Management Facility

Recycle where possible. Compost food scraps for use in your garden.

ZONE 1

Place your items on the verge on 3 September 2023, no sooner

ZONE 2

Place your items on the verge on 17 September 2023, no sooner